

**FISCHBEIN PORTABLE  
BAG CLOSER  
SERIES E**

**OPERATING INSTRUCTIONS**

The Don Marshall Company, Inc.  
235 Maple Street - PO Box 124  
Plain City, Ohio 43064  
614-873-8520, Fax: 614-873-8338  
[info@donmarshall.net](mailto:info@donmarshall.net)

## SUGGESTIONS

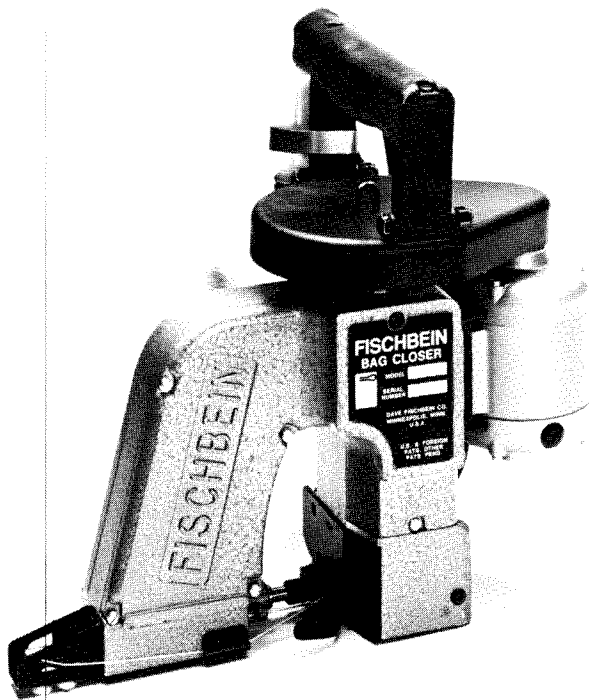
To insure successful operation of machine, study following instructions with care.

Machine is shipped with sample of sewing. Check sample for stitching and chain appearance.

After studying instructions, practice sewing on the sample or an empty bag until control of machine is mastered. Then proceed to close filled bags.

## SERVICE

Prompt repair service, parts, thread, and supplies are available from the Dave Fischbein Company or authorized representatives. Service machines immediately available at nominal rental, plus transportation charges.



## PROPER OPERATING PROCEDURES

Hold machine in right hand with forefinger on switch button at bottom of handle as shown in photograph. A slight finger pressure against switch button will start machine. Machine automatically stops when pressure is released.

Hold bag top in left hand at starting side and position the bag material close to and between machine's presser foot and throat plate. Machine will now automatically engage bag when starting button is pressed. After sewing an inch or two on bag, stop machine by releasing starting button. Then move left hand to finishing side of bag and proceed to finish closing.

To finish the closing operation, run machine off the bag two or three inches. With machine running, pull thread chain into "V" shaped slot at rear of throat plate where moving knife will automatically cut thread chain. With a little practice, thread cutting operation can be accomplished swiftly by merely rotating the machine slightly in a counter clockwise direction after the bag has been closed.

**Important! Always sew well above contents of bag. Do not sew farther than four inches down from the top of textile bag, and not more than two inches down from top of paper bag. Never interfere with the feeding of the machine as it sews across the bag, either by pulling it, holding it back, or pulling up.**

## HOW TO CLOSE A PAPER BAG

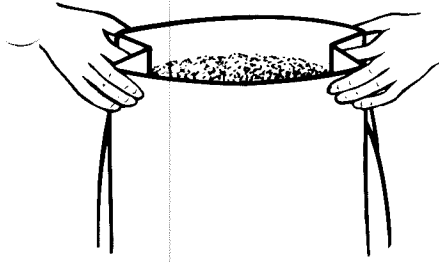


Figure No. 1

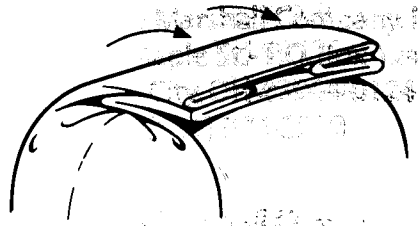


Figure No. 2

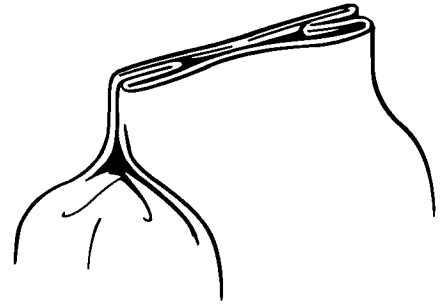


Figure No. 3

After bag is filled, weighed, and ready for closing, the operator should first reform gussets. See Fig. No. 1.

Next, fold or "break" top of bag sharply over contents. See Fig. No. 2.

Bring top of bag upright into closing position. The sides will be close together, smooth, and wrinkle free. See Fig. No. 3.

Proceed with sewing operation, **but sewing no more than two inches down from top of bag.**

If sifting is a problem, merely tuck in the inner ply tightly over contents and proceed to sew remaining plies.

NOTE: Sufficient top is necessary to properly "break" bag.

## GENERAL RECOMMENDATIONS

The machine uses a number 12, 4-ply thread, wound on 8-oz. cones. For maximum strength of closure, the Dave Fischbein Company, or authorized representative, can supply Fischbein Premium Synthetic Thread in cartons of 12 or 32 cones. Each cone will close about 450 normal size 50 lb. bags.

Installation of any kind is not necessary. Merely arrange a box, shelf or bracket so that, between bags, operator can conveniently set machine down or suspend it from the ceiling with a Fischbein Model 1550 suspension unit. **Do not operate machine from direct current (DC) or a 220 volt line unless machine has been specifically ordered for same.** Use only 110 volt AC line.

Machine feeds automatically. Don't pull or hold it back as it feeds across the bag.

Don't try to operate machine with bent or blunt needle.

Don't disturb connecting rod and eccentric, part No. 11079, or looper cam, part No. 11310. They are timed and set at factory.

NOTE: SEE FORM NO. 400-681 FOR INSTRUCTIONS REGARDING MAINTENANCE, ADJUSTMENTS, ETC.

## MAINTENANCE

This machine is equipped with a manual oiling system. To lubricate the moving parts, press the button on the oil pump two times. This will dispense the correct amount of oil for an average four hours use under normal conditions.

**The oil reservoir in the pump must have clean oil at all times. Never operate this machine without a cover on the oil reservoir.**

For best results, use genuine Fischbein Cleaning Solvent and #5-100 Lubricating Oil obtainable from the Dave Fischbein Company or any Authorized Representative. Wash out dirt as follows: Unthread needle. With machine running, dip portion shown, Fig. No. 1, in three or four inches of solvent for about 10 seconds. (Important: Use Fischbein Cleaning Solvent. Do not use gasoline or similar agent.)

If machine skips stitches or fails to chain off, the cause could be any of the following: Excessive wear, requiring rebuilding or servicing; improper threading or tension (see special instructions on threading and tension enclosed with this form); bent or incorrectly installed needle; damaged or misadjusted looper; incorrect needle bar setting. To check these adjustments or replace these parts, carefully follow instructions listed below:

Do not disturb connecting rod, part No. 11079 or looper cam, part No. 11310. They are timed and set at factory.

## NEEDLE INSTALLATION

Insert new needle into needle bar as far as it will go, with the long groove facing exactly outside of machine. The long groove will enter into bar. Lock needle securely with wrench provided with machine. See Fig. No. 2.

## LOOPER INSTALLATION

Remove needle, throat plate, feed dog, and presser foot. (To remove presser foot, loosen the two presser foot set screws, remove needle bar guard, part No. 11101. Using a screwdriver as a lever lift up the presser bar clamp, part No. 11405, which will allow the presser foot sufficient clearance to slide off the bottom of presser bar. DO NOT loosen or alter setting of the presser bar clamp, part No. 11405.) Loosen looper set screw, No. SS832316FP and remove old looper. Insert new looper, making sure that it is down in the looper holder, part No. 11314 as far as it will go. Securely tighten looper set screw against flat on looper shank. Install new straight needle. NOTE: The point of the looper must pass through the center of the needle scarf with about  $1/64$ " clearance between looper point and needle. See "A," Fig. No. 3. (The scarf is the hollowed out section just above the eye of the needle. See Fig. No. 3.) Unless the looper holder and/or needle bar have moved or have slipped, the looper will time up automatically. If necessary, adjust clearance between looper point and needle by loosening the looper holder clamp screw and sliding the looper holder in or out on looper shaft as required. See next paragraph for needle bar setting.

## LOOPER TIMING ADJUSTMENT

This adjustment does not have to be made when replacing the looper, but only after looper shaft, looper cam, or cam follower has been replaced.

The looper stroke is correct when there is approximately  $1/32$ " between looper point and edge of needle when looper is at maximum back stroke. See "D," Figure No. 4. To adjust, first rotate machine in sewing direction so that looper is at maximum back stroke position, then loosen clamp screw No. SC54058 in part No. 11307 and move looper as necessary.

## NEEDLE BAR ADJUSTMENT

Remove needle bar guard, part No. 11101. Turn machine pulley in normal sewing direction until looper is in approximately position shown in Fig. No. 5 as needle is on the upstroke. Slightly loosen clamping screw on needle bar clamp, part No. 11502. Raise or lower needle bar and/or turn machine pulley to bring looper point flush with or not more than  $1/64$ " ahead of edge of needle, see "B," Fig. No. 5, and to align bottom edge of looper flush with top of needle eye, see "C," Fig. No. 5. Do not change looper setting. Securely lock needle bar clamp and replace needle bar guard. Recheck for proper needle/looper clearance, Fig. No. 3.

## STITCH LENGTH

The length of stitch is  $3\frac{1}{2}$  to the inch, when, at their highest point, the teeth of the feed dog protrude  $3/32$ " above the throat plate. If the stitches shorten up, check the following:

1. Teeth on feed dog may be worn down. Feed dog must then be replaced.
2. Feed dog may have slipped so that the teeth protrude less than  $3/32$ ". Merely raise the feed dog by raising the adjusting screws No. SS64038FP located on the feed carrier block. Note that there is a set of locking screws No. SS64038FP on the under side of the feed carrier block.

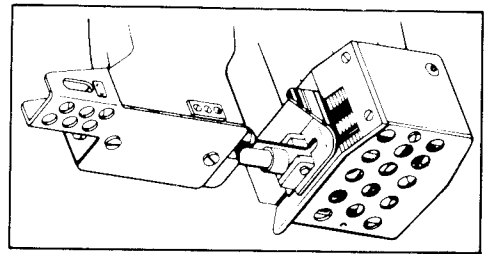


Figure No. 1

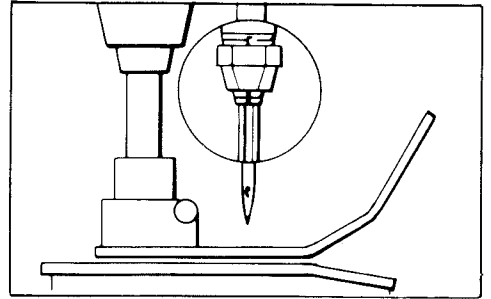


Figure No. 2

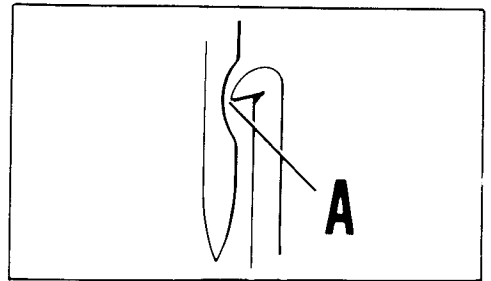


Figure No. 3

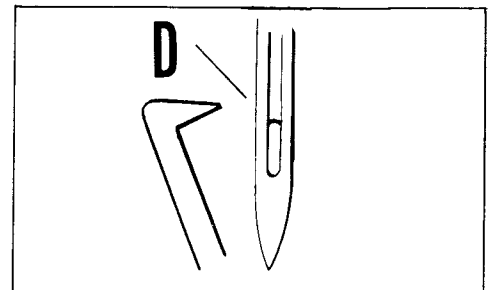


Figure No. 4

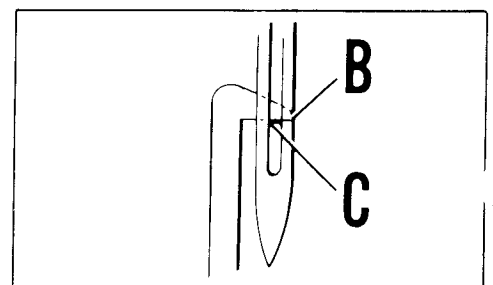
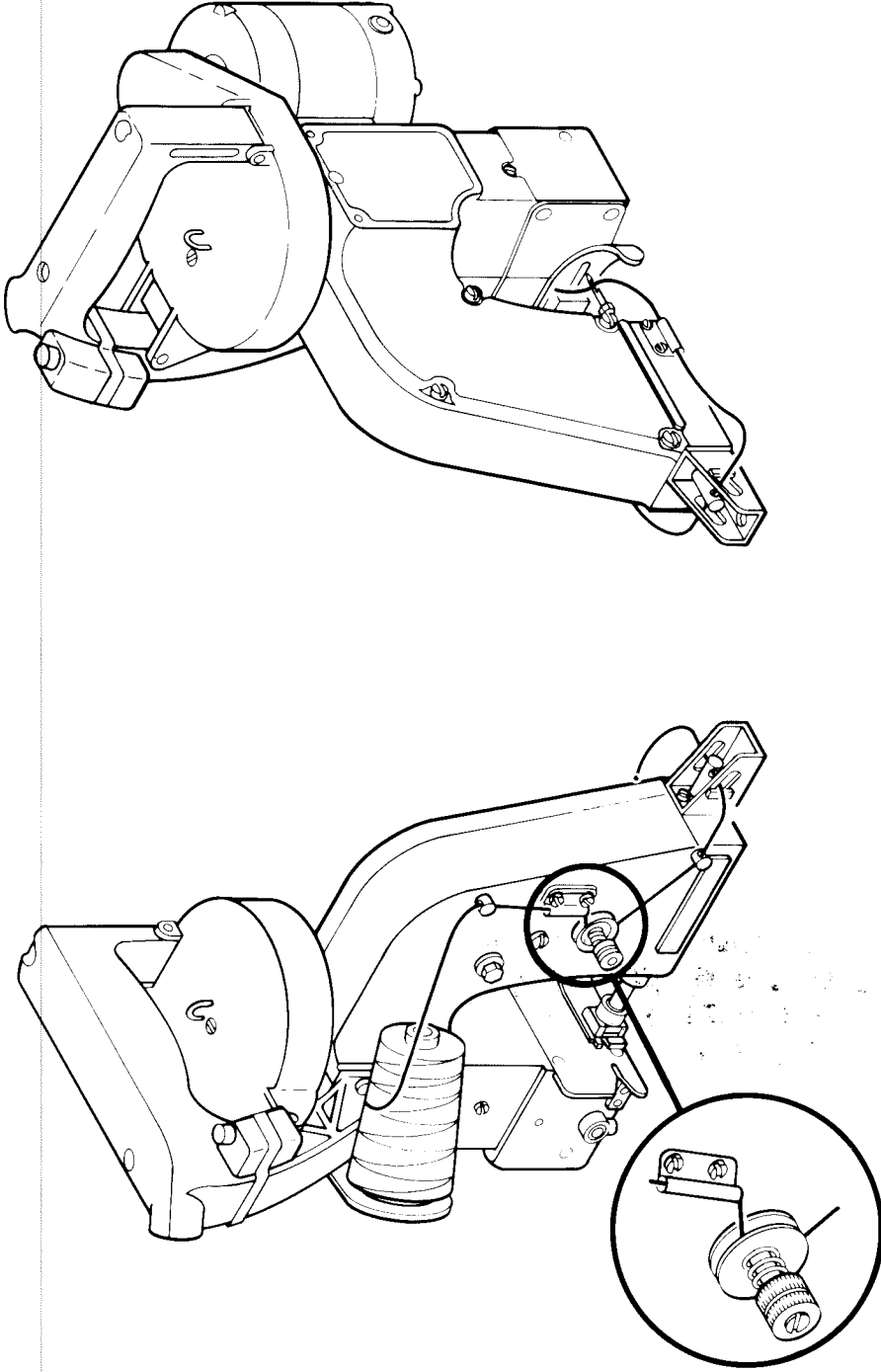


Figure No. 5

## THREADING AND TENSION



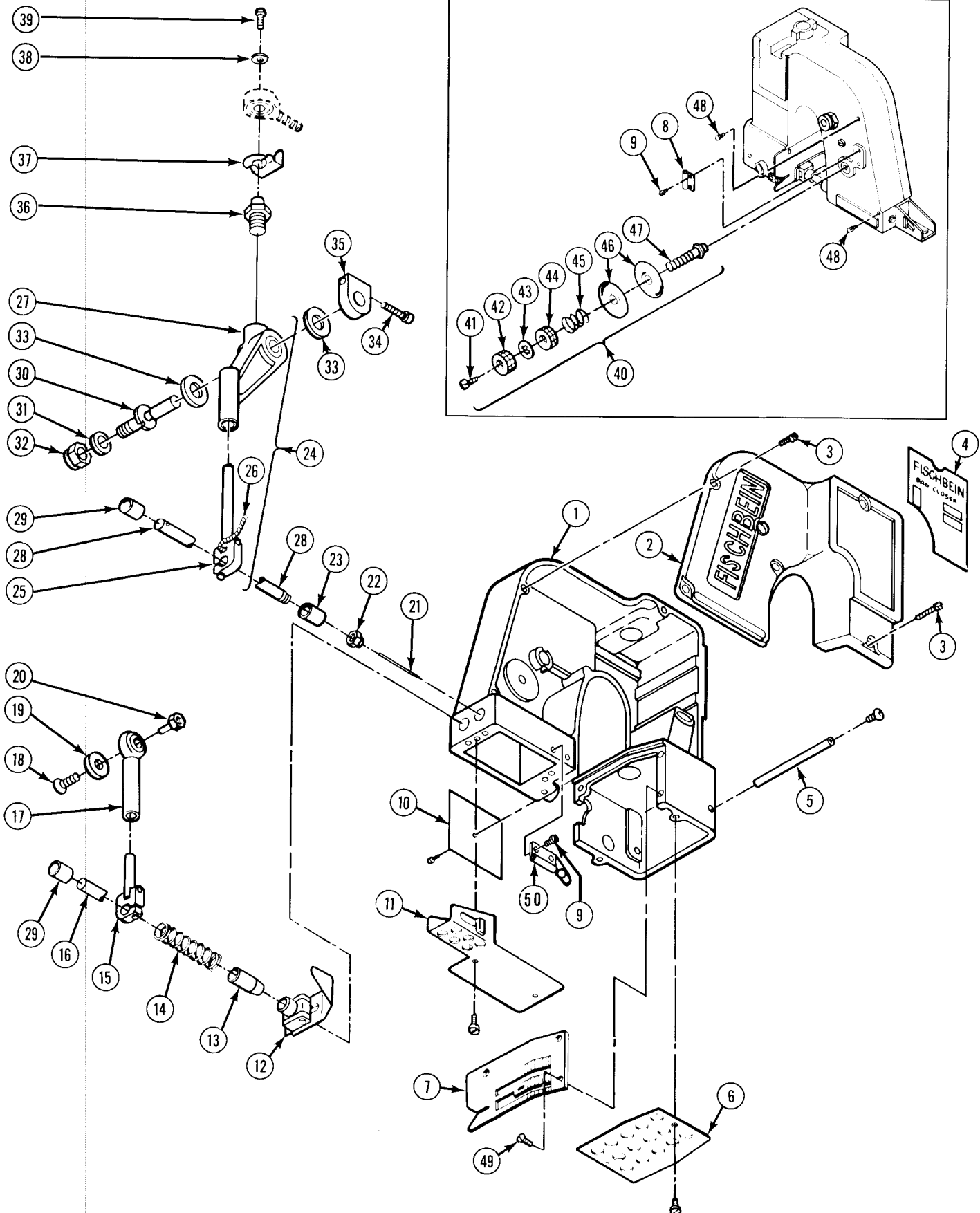
To install new cone of thread, push thread clamping bolt, part No. 11804, through hole in top of cone and securely lock in position with wing nut, part No. 11805. Cone of thread must not rotate or wobble on thread stand. Follow illustration above, being sure that thread passes **between** the two tension discs, parts No. 11114. Thread needle from outside to inside of machine. Leave about 1½" of thread dangling through needle, and proceed to sew bags in normal manner.

11805

**If asphalt laminated or water proof bags are being used, it is necessary to lubricate thread by soaking full cones in container of Fischbein Thread Lubricant.**

Tension is the degree of resistance the thread meets in passing between the tension discs, part No. 11114. Too loose a tension will cause the thread to tear or will leave loose loops of thread on the bag instead of nice firm stitches. Too tight a tension will also cause the thread to tear or will cause textile bag material to pucker. In either case, the machine may not chain off. To alter the amount of tension, loosen upper tension nut, part No. 11116. Turn lower tension nut, part No. 11117, about ¼ turn at a time — up to loosen tension, or down to tighten tension — until desired stitch appearance is obtained. Be sure to re-lock upper tension nut.

PLATE A



# MOD. "E+" HOUSING, NEEDLE LEVER, PRESSER FOOT

ILLUSTRATED PARTS BREAKDOWN  
ORDER BY NUMBER

## PLATE A

ITEM	QUAN.	PART NO.	DESCRIPTION
1	1	11288	MOD. E+ ASSY., HOUSING & COVER W/BUSHINGS
	8	SS832316	SCREW, SOC. SET — # 8-32 N.C. X 3/16 (SCREW FOR ALL BUSHINGS)
2	1	11289	COVER, HOUSING — MOD. E+ (PART OF ITEM # 1)
3	6	FR83258	SCREW, FILLISTER HD. — # 8-32 N.C. X 5/8
4	1	11295	NAMEPLATE, MOD. E+
5	1	11010	STUD, FEED DOG, CARRIER SLIDE (MOD. E)
	2	SB103214	SCREW, SOC. BUTTON HD. — # 10-32 N.F. X 1/4
6	1	11102	COVER, LOOPER
	1	11108	STUD, LOOPER COVER
7	1	11210	PLATE, THROAT — STANDARD
	1	11212	PLATE, THROAT — TAPING
8	1	11118	TUBE, THREAD GUIDE—REAR
9	4	B632316	SCREW, BINDING HD. — # 6-32 N.C. X 3/16
10	1	11009	PLATE, COVER — MOD. E
	1	B103214	SCREW, BINDING HD. — # 10-32 N.F. X 1/4
11	1	11101	GUARD, NEEDLE BAR
	3	B832316	SCREW, BINDING HD. — # 8-32 N.C. X 3/16
12	1	11400	ASSY., PRESSER FOOT
	1	11399	PRESSER FOOT, TAPING & PLASTIC
	1	11402	BOLT, HINGING
	1	11711	NUT
	2	SS832316FP	SCREW, SOC. SET — # 8-32 N.C. X 3/16 (FLAT POINT)
13	1	11413	BUSHING, LOWER
14	1	11414	SPRING, PRESSER BAR
15	1	11405	ASSY., CLAMP — PRESSER BAR
	1	SC54012	SCREW, SOC. CAP — # 5-40 N.C. X 1/2
16	1	11404	PRESSER BAR
17	1	11407	ASSY., LEVER — LIFTER
18	1	T83212	SCREW, TRUSS HD. — # 8-32 N.C. X 1/2
19	1	11410	WASHER, FELT
20	1	11417	STUD, INTERNAL THREAD
21	1	D5	NEEDLE
22	1	11501	NUT, NEEDLE BAR
23	1	11504	BUSHING, NEEDLE BAR — LOWER
24	1	11099	ASSY., CLAMP — NEEDLE BAR LEVER (MOD. E)
25	1	11502	ASSY., CLAMP — NEEDLE BAR
26	1	11508	WICKING
27	1	11091	ASSY., NEEDLE LEVER — MOD. E
28	1	11500	NEEDLE BAR
29	2	11503	BUSHING, NEEDLE BAR & PRESSER BAR — UPPER
30	1	11287	PIN, PIVOT — MOD. E
31	1	75391	WASHER, FLAT
32	1	11268	NUT, LOCK (NYLOK SPECIAL) — 3/8 — 24 N.C.
33	2	75367	WASHER, THRUST — NEEDLE LEVER
34	1	SC64058	SCREW, SOC. CAP — # 6-40 N.F. X 5/8
35	1	11008	CLAMP, PIVOT — NEEDLE (MOD. E)
36	1	11507	STUD, CONNECTING ROD
37	1	11510	SPRING
38	1	11208	WASHER
39	1	H103212	SCREW, HEX HD. — # 10-32 N.F. X 1/2
40	1	11112	ASSY., TENSION — COMPLETE
41	1	F64038	SCREW, FLAT HD. — # 6-40 N.F. X 3/8
42	1	11116	NUT, TENSION — UPPER
43	1	11120	WASHER, LOCK — TENSION
44	1	11117	NUT, TENSION — LOWER
45	1	11115	SPRING, TENSION
46	2	11114	DISC, TENSION
47	1	11113	STUD, TENSION
48	2	11109	EYELET, THREAD PULLOFF
49	3	F64038	SCREW, FLAT HD. — # 6-40 N.F. X 3/8
50	1	11321	TUBE, THREAD GUIDE (FRONT)

(PART OF ITEM # 24)

(PART OF ITEM # 24)

(PART OF ITEM # 24)

(PART OF ITEM # 40)

(PART OF ITEM # 40)

(PART OF ITEM # 40)

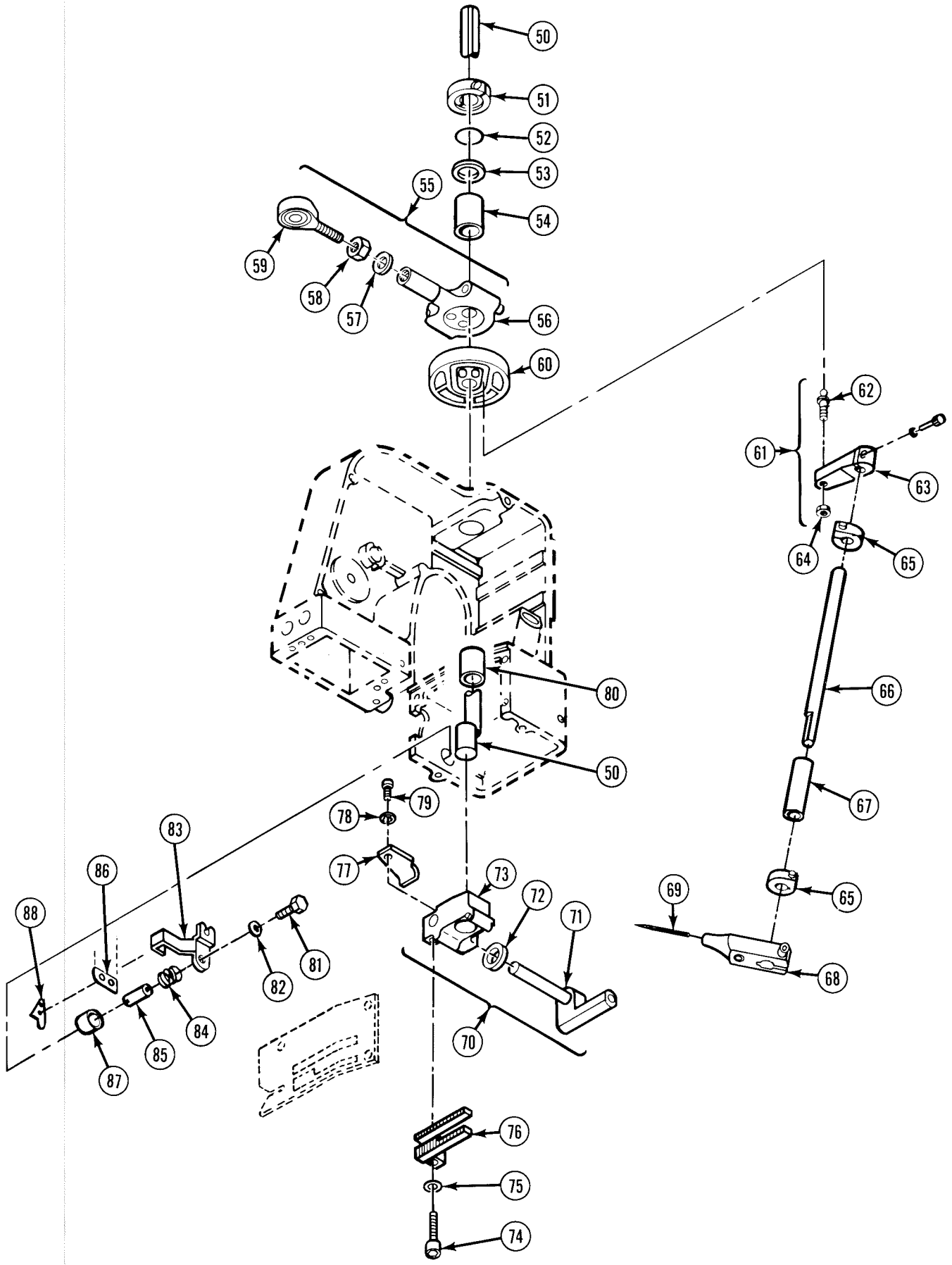
(PART OF ITEM # 40)

(PART OF ITEM # 40)

(PART OF ITEM # 40)

(PART OF ITEM # 40)

PLATE B



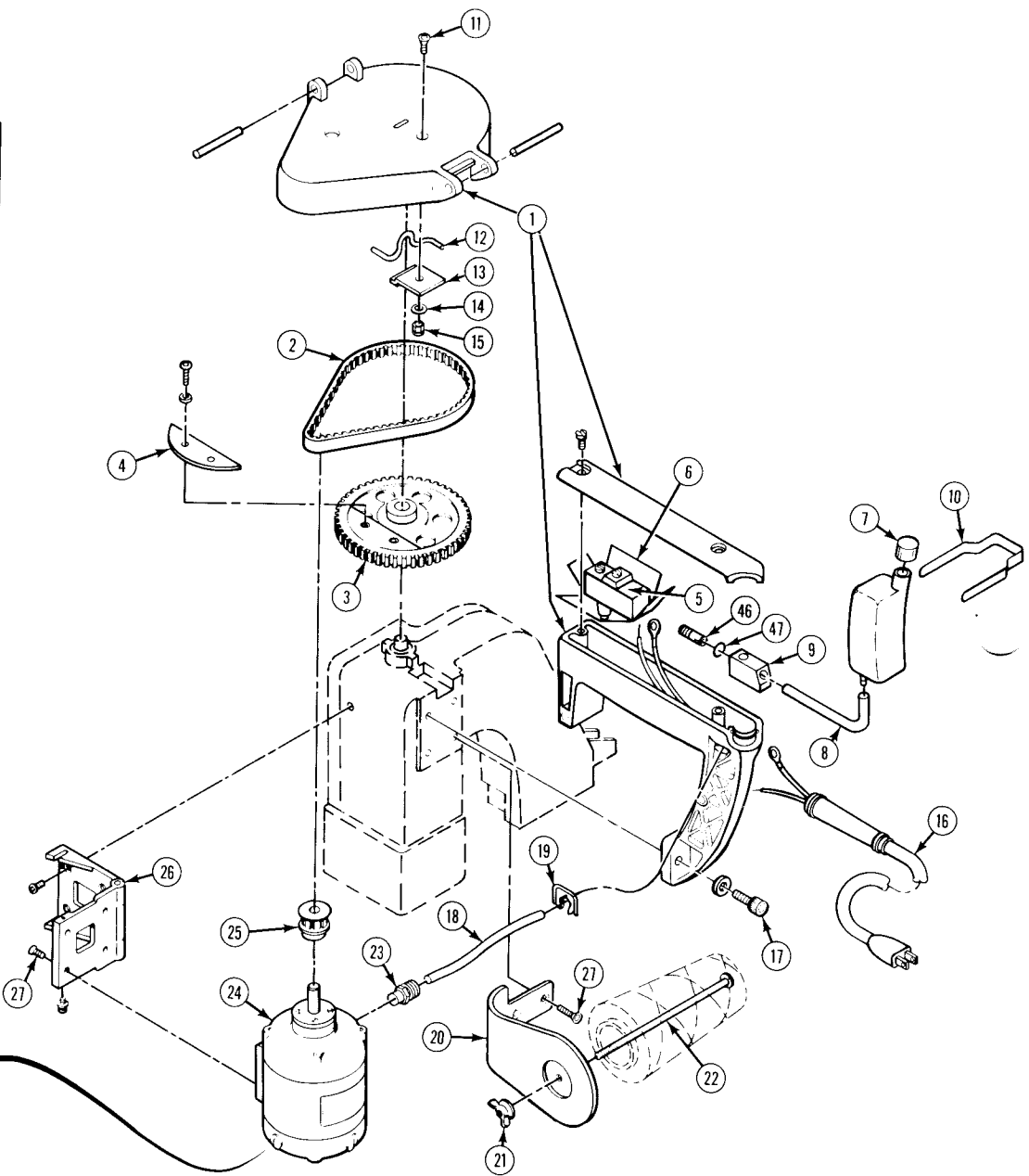
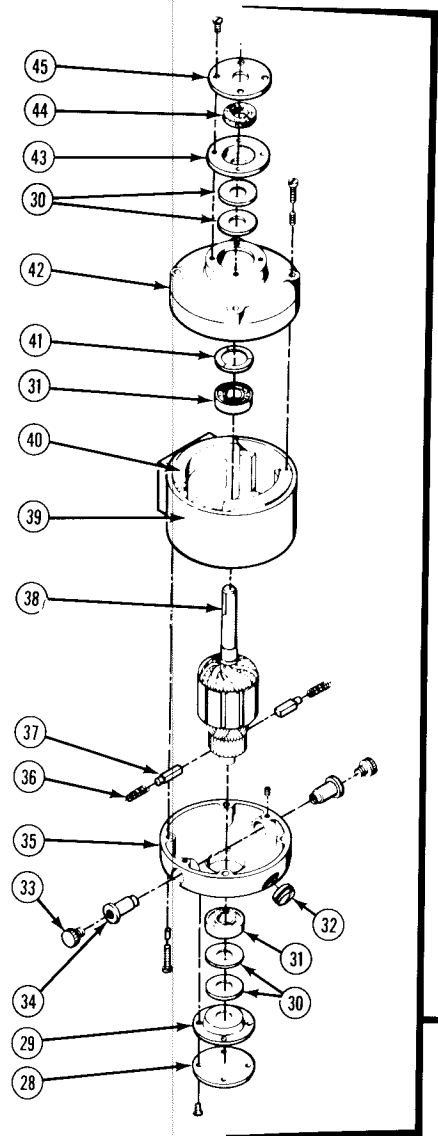


# MODEL "E+" MAIN SHAFT & LOOPER ASSEMBLY

ILLUSTRATED PARTS BREAKDOWN  
ORDER BY NUMBER

## PLATE B

ITEM	QUAN.	PART NO.	DESCRIPTION
50	1	11600	MAIN SHAFT
51	1	11616	COLLAR, MAIN SHAFT
	1	SC54038	SCREW, SOC. CAP - # 5-40 N.C. X 3/8
52	1	10420	RING, "O"
53	1	11006	WASHER, THRUST
54	1	11601	BUSHING, MAIN SHAFT - REAR
55	1	11014	ASSY., CON ROD & BEARING
56	1	11079	ASSY., CON ROD & ECCENTRIC (PART OF ITEM # 55)
57	1	WIT516	WASHER, INTERNAL TOOTH - 5/16 (PART OF ITEM # 55)
58	1	11608	NUT, HEX - SPECIAL (PART OF ITEM # 55)
59	1	11607	BEARING, ROD END (PART OF ITEM # 55)
60	1	11310	ASSY., CAM - LOOPER
	1	11311	SCREW, SOC. SET - # 10-32 N.F. X 5/8 (CONE POINT)
	1	SS103212	SCREW, SOC. SET - # 10-32 N.F. X 1/2
61	1	11317	ASSY., ARM & STUD - CAM FOLLOWER
62	1	11308	STUD, CAM FOLLOWER (PART OF ITEM # 61)
63	1	11307	ARM, FOLLOWER - CAM (PART OF ITEM # 61)
	1	SC54058	SCREW, SOC. CAP. # 5-40 N.C. X 5/8 (PART OF ITEM # 61)
	1	11313	WASHER, FLAT - # 5 (SPECIAL) (PART OF ITEM # 61)
64	1	11309	NUT, HEX - SPECIAL (PART OF ITEM # 61)
65	2	11304	COLLAR, LOOPER SHAFT
	2	SC54012	SCREW, SOC. CAP - # 5-40 N.C. X 1/2
66	1	11303	SHAFT, LOOPER
67	1	11019	BUSHING, LOOPER SHAFT
68	1	11301	HOLDER, LOOPER
	1	SS832316FP	SCREW, SOC. SET - # 8-32 N.C. X 3/16 (FLAT POINT)
	1	SC54014	SCREW, SOC. CAP - # 5-40 N.C. X 1/4
69	1	11300	LOOPER
70	1	11271	ASSY., FEED DOG CARRIER BLOCK & SLIDE
71	1	11002	SLIDE, MOD. E (PART OF ITEM # 70)
72	1	11410	WASHER, FELT (PART OF ITEM # 70)
73	1	11015	CARRIER BLOCK, FEED DOG (MOD. E) (PART OF ITEM # 70)
	4	SS64038FP	SCREW, SOC. SET - # 6-40 N.F. X 3/8 - FLAT POINT (PART OF ITEM # 70)
74	1	SC8321	SCREW, SOC. CAP - # 8-32 N.C. X 1
75	1	WF8S	WASHER, FLAT - # 8-SPECIAL
76	1	11203	FEED DOG
	1	11215	FEED DOG, SPECIAL (LINEN MACHINE ONLY)
77	1	11003	CLIP, ANGLE - MOD. E
78	1	WIT8	WASHER, INTERNAL TOOTH - # 8
79	1	H832516	SCREW, HEX H.D. - # 8-32 N.C. X 5/16
80	1	11602	BUSHING, MAIN SHAFT - FRONT
81	1	H1032516	SCREW, HEX HD. - # 10-32 N.F. X 5/16
82	1	WIT10	WASHER, LOCK - # 10
83	1	11007	BRACKET, KNIFE - MOD. E
84	1	11704	SPRING, KNIFE - TENSION
85	1	11707	SHAFT, KNIFE
86	1	11703	KNIFE, STATIONARY
	2	F348516	SCREW, FLAT HD. - # 3-48 NC X 5/16
87	1	11016	BUSHING, KNIFE SHAFT
88	1	11702	KNIFE, MOVING
	2	F348316	SCREW, FLAT HD. - # 3-48 N.C. X 3/16



# MODEL E HANDLE & ELECTRIC DRIVE

ILLUSTRATED PARTS BREAKDOWN

ORDER BY NUMBER

I	QUAN	PART NO.	DESCRIPTION
1	1	11084	ASSY., BELT GUARD & HANDLE (MOD. E)(COMP)
	1	11018	GUARD, BELT (MOD. E)
	1	11256	GUARD, BELT — MOD. E (12V)
	1	11174	ASSY., HANDLE & COVER (MOD. E)
	1	11011	COVER, HANDLE (MOD. E)
	2	R103238	SCREW, ROUND HD.— # 10-32 N.F. X 3/8
	2	75359	PIN, SPRING — 1/4 DIA. X 1 1/2
2	1	11909	BELT
	1	11947	BELT, 12V
3	1	11904	PULLEY
4	1	11938	COUNTERWEIGHT
	2	WS8	WASHER, SPRING — # 8
	2	SB83238	SCREW, SOC. BUTTON HD.— # 8-32 N.C. X 3/8
5	1	11806	SWITCH
	1	11794	SWITCH, 12V
6	2	11807	INSULATION
	1	11786	INSULATION, SWITCH — 12V
7	1	11069	RESERVOIR, OIL (MOD. E)(COMPLETE)
	1	11176	CAP, OIL RESERVOIR
8	1	11141	TUBING, OIL (MOD. E)
9	1	11148	VALVE, INERTIA (MOD. E)
10	1	11071	CLAMP, OIL RESERVOIR (MOD. E)
11	1	F832516	SCREW, FLAT HD.— # 8-32 N.C. X 5/16
12	1	11012	HANGER (MOD. E)
13	1	11017	CLIP, HANGER (MOD. E)
	1	WIT8	WASHER, INTERNAL TOOTH — # 8
	1	NH832	NUT, HEX — # 8-32 N.C.
16	1	11808	CORD, SET
	1	11795	CORD SET — 12V
17	2	SC142034	SCREW, SOC. CAP — 1/4-20 N.C. X 3/4
	2	WC14	WASHER, COMPRESSION — 1/4
18	1	11988	MOTOR LEAD — 3 WIRE SJO
19	1	11073	STRAIN RELIEF
20	1	11815	STAND, THREAD (MOD. E)
21	1	11805	NUT, WING — 1/4-20 N.C.
22	1	11804	BOLT, THREAD CLAMPING
23	1	P3481	GRIP, CORD
24	1	11950	MOTOR, 115V
	1	11951	MOTOR, 230V
	1	11952	MOTOR, 12V
25	1	11902	PULLEY, MOTOR
	1	11941	PULLEY, MOTOR — 12V
	4	11907	SPACER, 12V
26	1	11906	ASSY., HINGE — MOTOR MOUNT (COMPLETE)
	2	P632716S	SCREW, SEMS — PAN HD.— # 6-32 N.C. X 7/16
27	10	SF103238	SCREW, SOC. FLAT — # 10-32 N.F. X 3/8
28	1	11927	PLATE, BALL BEARING (CLOSED)
	4	11918	SCREW, END PLATE

ITEM	QUAN	PART NO.	DESCRIPTION
29	1	11953	WASHER, FELT — RETAINING (CLOSED END)
30	AS REQ.	11954	WASHER, SPACING
31	2	11955	BEARING, BALL
	2	11956	BEARING, BALL — 12V
32	1	11977	PLUG, INSPECTION HOLE
33	2	11917	SCREW, CAP. — BRUSH HOLDER
34	2	11983	HOLDER, BRUSH — 1/2
	2	11985	HOLDER, BRUSH — 1/2 (12V)
	2	11930	SCREW, SET — BRUSH HOLDER
35	1	11957	END BELL, BRUSH END
	1	11958	END BELL, BRUSH END — 12V
	4	11919	SCREW, ATTACHING END BELL
36	2	11916	SPRING, BRUSH
37	2	11915	BRUSH
	2	11978	BRUSH & SPRING — 12V
38	1	11959	ARMATURE, COMPLETE — 115V
	1	11960	ARMATURE, COMPLETE — 230V
	1	11961	ARMATURE, COMPLETE — 12V
39	1	11925	ASSY., RING & FIELD — 115V
	1	11926	ASSY., RING & FIELD — 230V
	1	11987	ASSY., RING & FIELD — 12V
40	1	11922	FIELD — 115V
	1	11923	FIELD — 230V
	1	11982	FIELD — 12V
	1	11962	WASHER, BALL BEARING SPRING
41	1	11962	WASHER, BALL BEARING SPRING
42	1	11963	END BELL — SHAFT END
	4	11919	SCREW, ATTACHING — END BELL
43	1	11964	WASHER, FELT — RETAINING (OPEN END)
44	1	11965	WASHER, FELT
45	1	11966	PLATE, BALL BEARING (OPEN END)
	4	11918	SCREW, END PLATE
46	1	11001	NIPPLE, OIL
47	1	75368	RING, "O"

## MOTOR INSTRUCTIONS

This motor is intermittent duty, which means that it should not run for long periods of time continuously. It is made for start and stop operations only, such as required by bag closing.

Brushes should be inspected at regular intervals so that wear can be detected, and replaced before they are about 1/8" in length. To remove brushes, take out two screws from each side of motor; when replacing brush, be sure it is replaced at the same axial position as removed. If it isn't, excessive sparking and loss of power will result. New brushes are furnished with machine and can be purchased from us at any time.