

FISCHBEIN BAG CLOSER
INSTRUCTIONS AND PARTS MANUAL

SEWING HEAD:

MODEL NO. 10,400

SERIAL NO. _____

The Don Marshall Company, Inc.
235 Maple Street - PO Box 124
Plain City, Ohio 43064
614-873-8520, Fax: 614-873-8338
info@donmarshall.net

INSTALLATION

MOTOR RECOMMENDATIONS

USE A 1 H.P. 1725 R.P.M. MOTOR. THE VARIABLE PULLEY ON THE SEWING HEAD PERMITS SPEED ADJUSTMENT. THE SEWING HEAD PULLEY MUST ROTATE CLOCKWISE.

INITIAL LUBRICATION

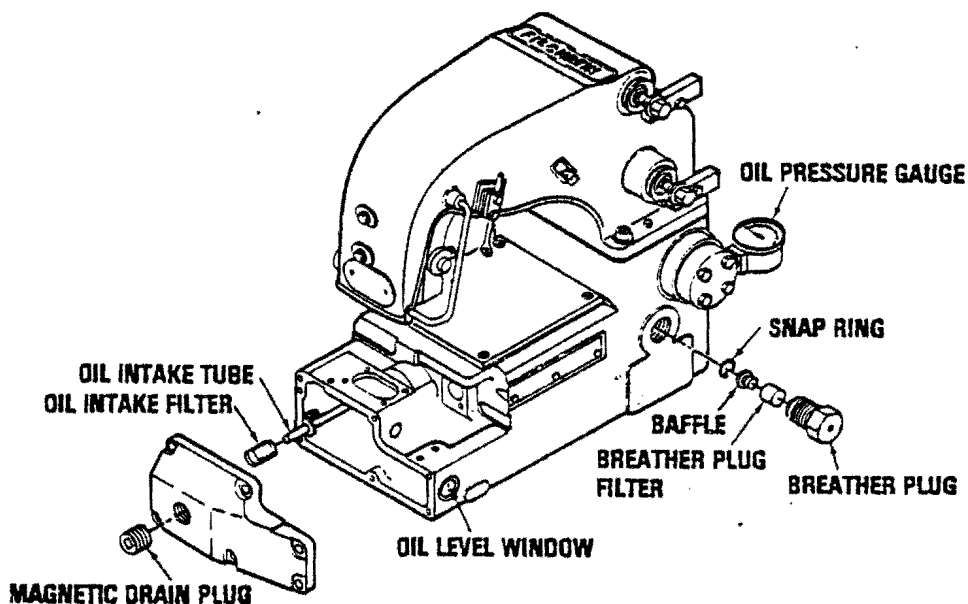
THE SEWING HEAD IS SHIPPED FROM THE FACTORY OIL FILLED. AT THE BEGINNING OF EACH DAY OR SHIFT, MAKE SURE THE OIL LEVEL WINDOW AT THE LOWER PORTION OF THE SEWING HEAD SHOWS OIL AT THE "OIL LEVEL" LINE. AFTER ABOUT 30 SECOND, THE OIL PRESSURE GAUGE SHOULD READ IN THE NORMAL 3 - 9 POUND RANGE. WHILE MACHINE IS RUNNING, THE OIL LEVEL WINDOW WILL SHOW LITTLE OR NO OIL. NEVER RUN MACHINE IF OIL PRESSURE GAUGE IS IN THE RED WARNING AREA.

MAINTENANCE

OIL

USE SPECIAL LUBRICATION OIL FOR THE SERIES 10,000 SEWING HEAD AVAILABLE FROM THE DAVE FISCHBEIN COMPANY OR ITS AUTHORIZED REPRESENTATIVES. AS A SUBSTITUTE, ANY GOOD GRADE OF SAE 20 MOTOR OIL OR ITS EQUIVALENT MAY BE USED. TEN OUNCES OF OIL WILL ADEQUATELY FILL THE MACHINE.

WHEN ADDING OR CHANGING OIL, REMOVE BREATHER PLUG AND POUR OIL INTO BREATHER PLUG HOLE. FILL UNTIL OIL REACHES "OIL LEVEL" LINE ON THE OIL LEVEL WINDOW. NEVER RUN MACHINE IF OIL PRESSURE GAUGE IS IN THE RED WARNING AREA. SEE DRAWING 1.



DRAWING 1

TO DRAIN OIL, REMOVE MAGNETIC DRAIN PLUG AND ALLOW OIL TO DRAIN. AT OIL CHANGE INTERVALS, ALSO CLEAN OIL INTAKE FILTER AND WIPE ANY ACCUMULATION OF PARTICLES OFF THE MAGNETIC DRAIN PLUG. INSPECT BREATHER PLUG AT LEAST ONCE A YEAR AND CLEAN OR REPLACE FOAM FILTER ELEMENT. CHANGE OIL EVERY TWO MONTHS OR 500 HOURS OF OPERATION, WHICHEVER COMES FIRST.

SEALS

ALL SEALS MUST BE HANDLED WITH EXTREME CAUTION. ANY SMALL AMOUNT OF DAMAGE IN HANDLING OR INSTALLATION WILL PERMIT LEAKAGE. WHEN REPLACING A SEAL, SATURATE BOTH IT AND THE SHAFT THOROUGHLY WITH OIL BEFORE ASSEMBLING. NEVER INSTALL A DRY SEAL OVER A DRY SHAFT.

CLEANING

REMOVE ACCUMULATIONS OF LINT FROM THE LOOPER AREA. IF PERMITTED TO REMAIN FOR LONG PERIODS OF TIME, THESE CAN SET UP A WICKING ACTION WHICH WILL ABSORB OIL FROM THE MACHINE. IF THE MACHINE IS OPERATED AROUND CORROSIVE OR STICKY PRODUCTS, OCCASIONALLY BLOW OFF OR SCRAPE SUCH EXPOSED PARTS AS FEED DOG TEETH, THROAT PLATE AND PRESSER FOOT. ALSO RECOMMENDED IS PERIODIC HAND OILING OF PRESSER FOOT HINGE BOLT AND SURFACES OF CUTTING KNIFE.

COLD AREA OPERATION

IN VERY COLD AREAS ALLOW MACHINE TO WARM UP BY RUNNING STEADILY FOR A FEW MINUTES BEFORE CLOSING ANY BAGS. FAILURE TO DO THIS, ESPECIALLY WITH UNITS RUNNING ON SINGLE PHASE CURRENT, CAN RESULT IN SLOW STARTING AND RUNNING OF THE SEWING HEAD. THIS CAUSES MIS-SYNCHRONIZATION WITH THE SPEED OF THE CONVEYOR BELT WHICH WILL BREAK THREAD, BADLY SCUFF TAPE AND CAUSE SEWING PROBLEMS UNTIL THE SEWING HEAD AND MOTOR WARM UP AND ATTAIN PROPER SPEED.

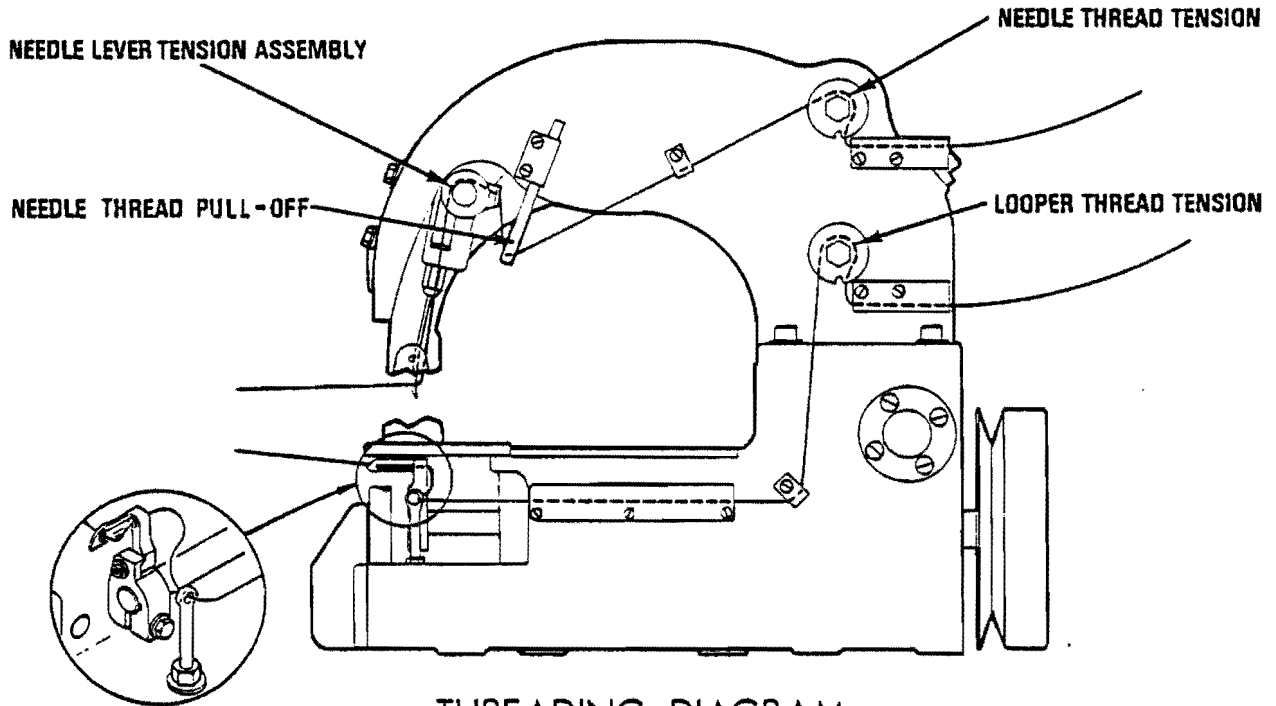
RUNNING AFTER PROLONGED SHUT-DOWN

AFTER PROLONGED SHUT-DOWN PERIODS, THE SEWING HEAD OIL SHOULD BE PUMPING PROPERLY AND THE SEWING HEAD AND MOTOR WARMED UP BEFORE CLOSING ANY BAGS. THIS IS EASILY ACCOMPLISHED BY RUNNING THE SEWING HEAD IN SHORT 2 - 3 SECOND CYCLES UNTIL THE OIL PRESSURE GAUGE READS IN THE NORMAL 3 - 9 POUND RANGE.

ADJUSTMENTS

THREADING

FOLLOW THE THREADING DIAGRAM FOR PROPER THREADING. BE SURE LOOPER THREAD PASSES THROUGH BOTH HOLES OF THE LOOPER.



THREADING DIAGRAM

DRAWING 2

TENSIONS

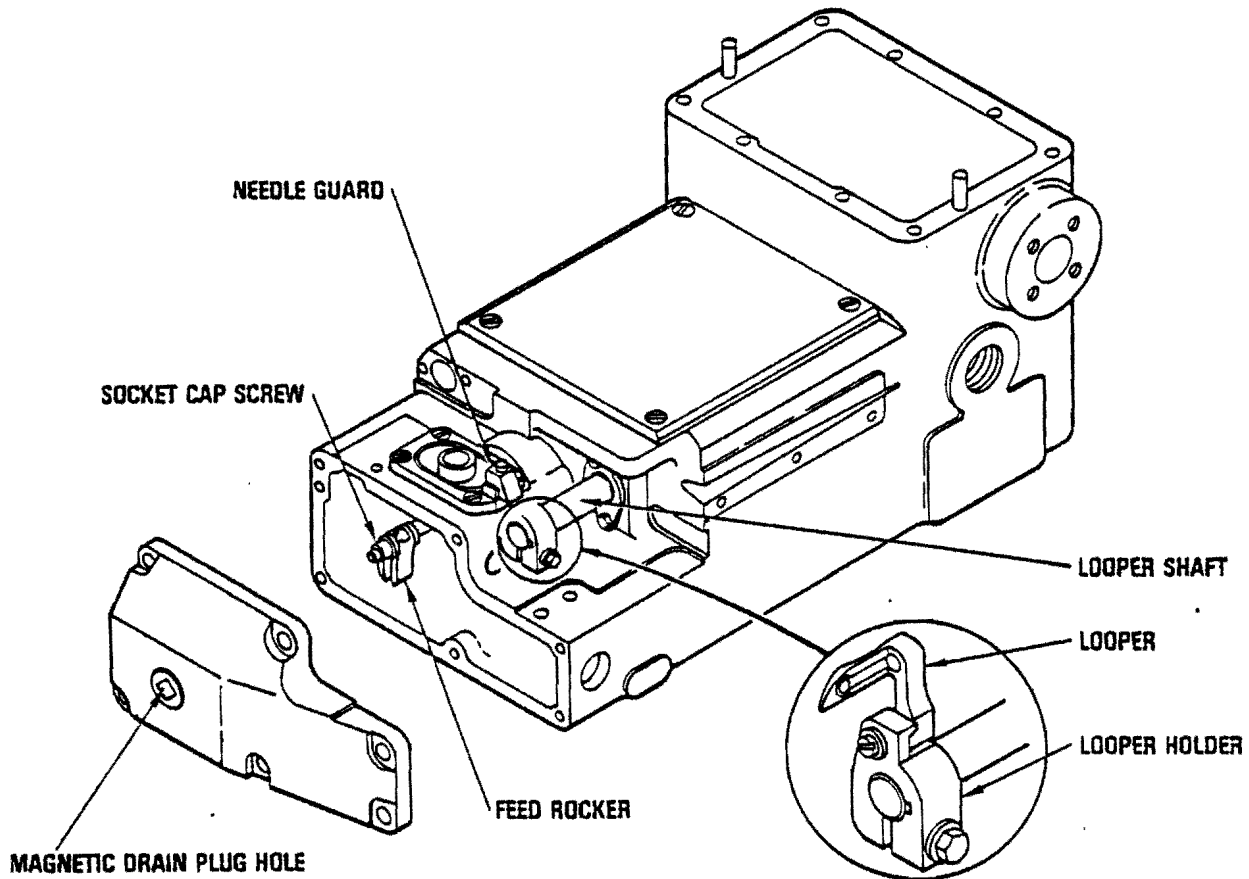
THE LOOPER TENSION MUST BE VERY LIGHT, BARELY DISCERNIBLE WHEN PULLING THREAD BY HAND. THE NEEDLE THREAD TENSION SHOULD BE VERY FIRM AND PUT A NOTICEABLE DRAG ON THE THREAD. THE TENSION ASSEMBLY LOCATED ON THE NEEDLE LEVER MUST PUT ONLY LIGHT PRESSURE, ABOUT THE SAME AS THE LOOPER TENSION, ON THE THREAD.

NEEDLE REPLACEMENT

BE SURE NEW NEEDLE IS INSERTED INTO THE NEEDLE CHUCK AS FAR AS IT WILL GO. LOCK NEEDLE SET SCREW AGAINST FLAT OF NEEDLE SHANK. CAUTION: USE THE SMALL NEEDLE WRENCH PROVIDED WITH THE MACHINE. EXCESSIVE PRESSURE ON THE NEEDLE SET SCREW CAN DAMAGE SCREW OR NEEDLE CHUCK.

STITCH LENGTH

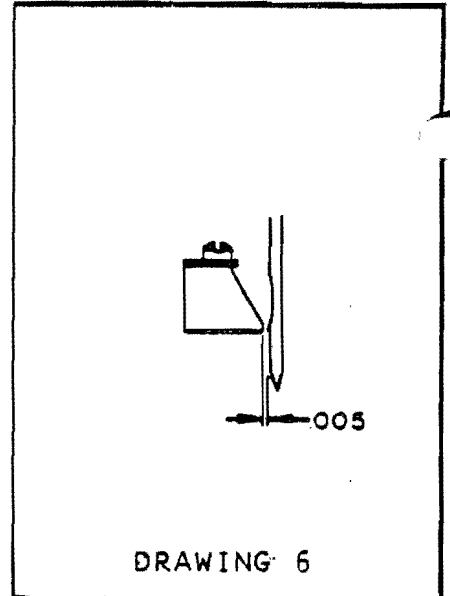
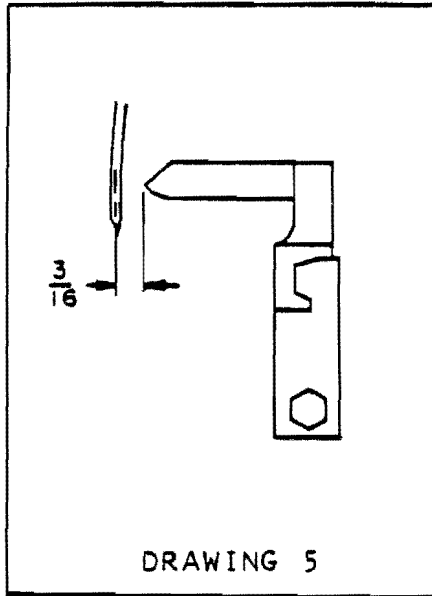
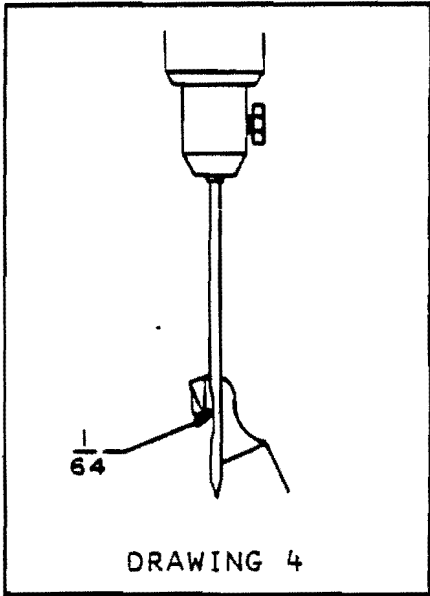
TO ADJUST STITCH LENGTH, REMOVE THE MAGNETIC DRAIN PLUG ON THE BOTTOM COVER. REACH THROUGH THE DRAIN PLUG HOLE WITH A 3/16 INCH ALLEN WRENCH AND LOOSEN THE SOCKET CAP SCREW ON THE FEED ROCKER. DO NOT COMPLETELY REMOVE CAP SCREW. TO SHORTEN STICH LENGTH, SLIDE LOOSENED CAP SCREW TOWARDS THROAT PLATE. TO LENGTHEN STICH LENGTH, SLIDE AWAY FROM THROAT PLATE. ALWAYS MAKE SURE ADJUSTING SCREW IS SECURELY RE-TIGHTENED. SEE DRAWING 3.



DRAWING 3

NEEDLE THREAD PULL-OFF

THIS ADJUSTMENT CAN VARY WITH DIFFERENT LENGTHS OF STITCH, BAG THICKNESS AND TYPE OF THREAD. THE NORMAL SETTING IS 1-1/4 INCHES FROM CENTER OF THREAD HOLE IN PULL-OFF TO BOTTOM OF PULL-OFF CLAMP. SEE DRAWING 2.



LOOPER

THE LOOPER TIMING IS SET AT THE FACTORY AND SHOULD NEVER BE ALTERED. IF THE LOOPER ONLY IS REPLACED AND THE POSITION OF THE LOOPER HOLDER HAS NOT BEEN CHANGED, THE ONLY ADJUSTMENT NECESSARY IS TO PROVIDE THE PROPER CLEARANCE OF ABOUT 1/64" AS THE LOOPER PASSES THE SCARF OF THE NEEDLE. SEE DRAWING 4.

LOOPER HOLDER

IF THE LOOPER HOLDER HAS BEEN MOVED AND NEEDS RESETTING, IT MUST BE POSITIONED ON THE LOOPER SHAFT SO THAT THE POINT OF THE LOOPER IS 3/16" FROM THE CENTER OF THE NEEDLE WHEN LOOPER IS AT ITS FURTHEST POINT BACK (TOWARDS THE PULLEY END OF THE MACHINE). SEE DRAWING 5.

NEEDLE GUARD

THE NEEDLE GUARD IS STATIONARY AND NEEDS NO ADJUSTMENT. IF IT IS REPLACED DUE TO EXCESSIVE WEAR OR DAMAGE, IT SHOULD BE SET SO THAT THE NEEDLE CLEARS IT BY ABOUT .005". SEE DRAWING 6.

PRESSER FOOT SPRING PRESSURE

TO ADJUST THE PRESSER FOOT SPRING PRESSURE, TURN THE HEX ADJUSTING SCREW ON TOP OF THE LEVER HOUSING. TURNING THE SCREW CLOCKWISE WILL INCREASE THE PRESSURE. THE PRESSURE HAS BEEN SET AT THE FACTORY AT ABOUT 40 POUNDS, WHICH SHOULD BE ADEQUATE FOR MOST PURPOSES.

FEED DOG HEIGHT

THE TEETH OF THE FEED DOG SHOULD PROTRUDE 1/16" ABOVE THE THROAT PLATE WHEN AT THEIR HIGHEST POINT. NO HEIGHT ADJUSTMENT OF THE FEED DOG SHOULD BE NECESSARY WHEN REPLACING IT. HOWEVER, IF THE FEED DOG HAS BEEN RESHARPENED OR IS BEING RAISED TO COMPENSATE FOR WORN TEETH (NOT RECOMMENDED PROCEDURES), IT WILL BE NECESSARY TO LOOSEN THE FEED DOG CARRIER ROD CLAMP, AND RAISE THE FEED DOG CARRIER ROD TO RESTORE THE PROPER 1/16" HEIGHT OF THE FEED DOG TEETH ABOVE THE THROAT PLATE. BE SURE TO ALIGN THE FEED DOG PROPERLY IN THE SLOTS OF THE THROAT PLATE BEFORE SECURELY LOCKING THE FEED DOG CARRIER ROD.

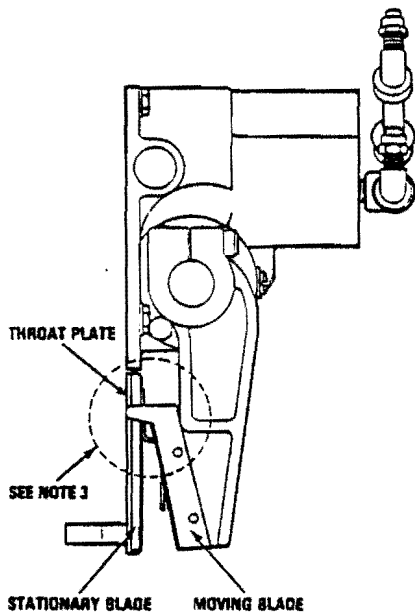
TAPE/THREAD CLIPPER ADJUSTMENT

NOTE 1: ANY TIME AN ADJUSTMENT OR REPLACEMENT IS MADE TO THE CLIPPER KNIVES, FEED DOG OR THROAT PLATE, LOCK NUT "A" MUST BE LOOSENED SO SET SCREW "B" CAN BE TURNED CLOCKWISE UNTIL THE STATIONARY BLADE AND THE MOVING BLADE SEPARATE. SEE DRAWING 8.

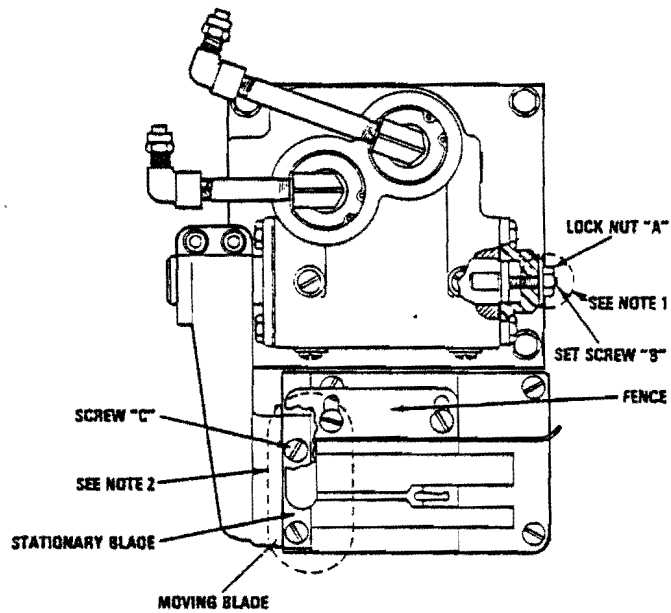
NOTE 2: TO ADJUST THE STATIONARY BLADE, FIRST REMOVE THE FENCE FROM THE THROAT PLATE AND LOOSEN SCREW "C". ADJUST THE STATIONARY BLADE SO THAT IT IS PARALLEL TO THE MOVING BLADE ACROSS THE FULL SURFACE OF THE BLADES. THIS WILL ALLOW GOOD SHEARING ACTION. SEE DRAWING 8.

NOTE 3: WHEN THE CLIPPER AIR IS ON AND THE KNIFE IS AT ITS HIGHEST POINT, THE EXTENSION ON THE MOVING BLADE SHOULD BE FLUSH WITH THE BOTTOM OF THE THROAT PLATE. SEE DRAWING 7.

AFTER MAKING ANY ADJUSTMENTS OR REPLACEMENTS, BE SURE SET SCREW "B" HAS BEEN TURNED COUNTER-CLOCKWISE UNTIL STATIONARY BLADE AND MOVING BLADE HAVE MADE FIRM CONTACT AND LOCK NUT "A" HAS BEEN RETIGHTENED.



DRAWING 7



DRAWING 8

TROUBLE SHOOTER
FOR FISCHBEIN MODEL 10,400 BAG CLOSER

I. SEWING HEAD

A. SYNCHRONIZATION

THE SEWING HEAD MUST BE SYNCHRONIZED WITH THE CONVEYOR BELT. THE HEAD SHOULD RUN ABOUT 5-10% FASTER THAN CONVEYOR. IF POWER IN-FEED AND TOP TRIMMER IS USED, IT MUST BE SYNCHRONIZED WITH THE CONVEYOR. ALL CONVEYOR MODELS ARE PROPERLY SYNCHRONIZED AT THE FACTORY, BUT DIFFERENCES IN VOLTAGE BETWEEN FACTORY AND CUSTOMER PLANT MIGHT MAKE MINOR ADJUSTMENTS NECESSARY.

B. OIL IN SEWING HEAD

1. CHECK OIL LEVEL DAILY. DO NOT ALLOW MACHINE TO RUN LOW.
2. REMOVE ACCUMULATIONS OF LINT AND DIRT FROM LOOPER AREA. IF PERMITTED TO REMAIN FOR LONG PERIODS OF TIME, THESE CAN SET UP A WICKING ACTION WHICH WILL ABSORB OIL FROM THE MACHINE.

C. THREAD BREAKAGE OR SKIPPING STITCHES

1. CHECK TO BE SURE NOTHING IS INTERFERING WITH THE FREE PASSAGE OF THE THREAD FROM THE CONES ALL THE WAY TO THE NEEDLE AND LOOPER.
2. CHECK TO BE SURE BOTH NEEDLE AND LOOPER ARE THREADED PROPERLY. SEE FIG. 2. USE TWEEZERS SUPPLIED WITH MACHINE TO THREAD TOP (OR BACK) END OF THE LOOPER.
3. CHECK THE NEEDLE THREAD PULL-OFF. SEE PAGE 4.
4. CHECK TENSION OF BOTH THREAD. SEE PAGE 3.
5. REPLACE NEEDLE. SEE PAGE 3.
6. CHECK CONDITION OF LOOPER. IF IT IS ROUGH OR HAS SOME NICKS, REPLACE IT. SEE PAGE 5.
7. CHECK CONDITION OF THROAT PLATE. IF IT IS ROUGH OR HAS NICKS, SMOOTH IT OUT OR REPLACE IT.

D. UNEVEN STITCH LENGTH OR POOR FEEDING (SHORT STITCHES)

1. CHECK SHARPNESS OF FEED DOG. IF DULL, REPLACE IT.
2. CHECK PRESSURE ON PRESSER FOOT. IT SHOULD BE APPROXIMATELY 40 LBS. SEE PAGE 5.
3. CHECK TO BE SURE TAPE IS ON REEL HOLDER PROPERLY AND THAT THERE IS NO BIND BETWEEN THE REEL HOLDER AND THE FOLDER.

E. EXCESSIVE NEEDLE DAMAGE

1. SEWING MAY BE TOO CLOSE TO CONTENTS OF BAG.
2. CHECK ALIGNMENT OF NEEDLE SLOT IN PRESSER FOOT TO BE SURE NEEDLE DOES NOT RUB.
3. CHECK PRESSER FOOT PRESSURE. SEE PAGE 5.
4. CHECK SYNCHRONIZATION. SEE PAGE 7.

II. PNEUMATIC CONTROLS

A. THE CLUTCH BRAKE ON THE SEWING HEAD MOTOR AND THE TAPE CUTTING KNIFE ASSEMBLY ARE BOTH PNEUMATICALLY OPERATED.

1. REGULATOR FOR CLUTCH BRAKE SHOULD BE 60 P.S.I. MAXIMUM.
2. REGULATOR FOR TAPE CLIPPER SHOULD BE 90 P.S.I. MINIMUM.
3. SEE MANUFACTURER'S INSTRUCTION SHEETS FURNISHED WITH MACHINE FOR PROPER MAINTENANCE AND OPERATION OF THE TWO FILTER/LUBRICATOR ASSEMBLIES.

III. TAPE

A. SCUFFING

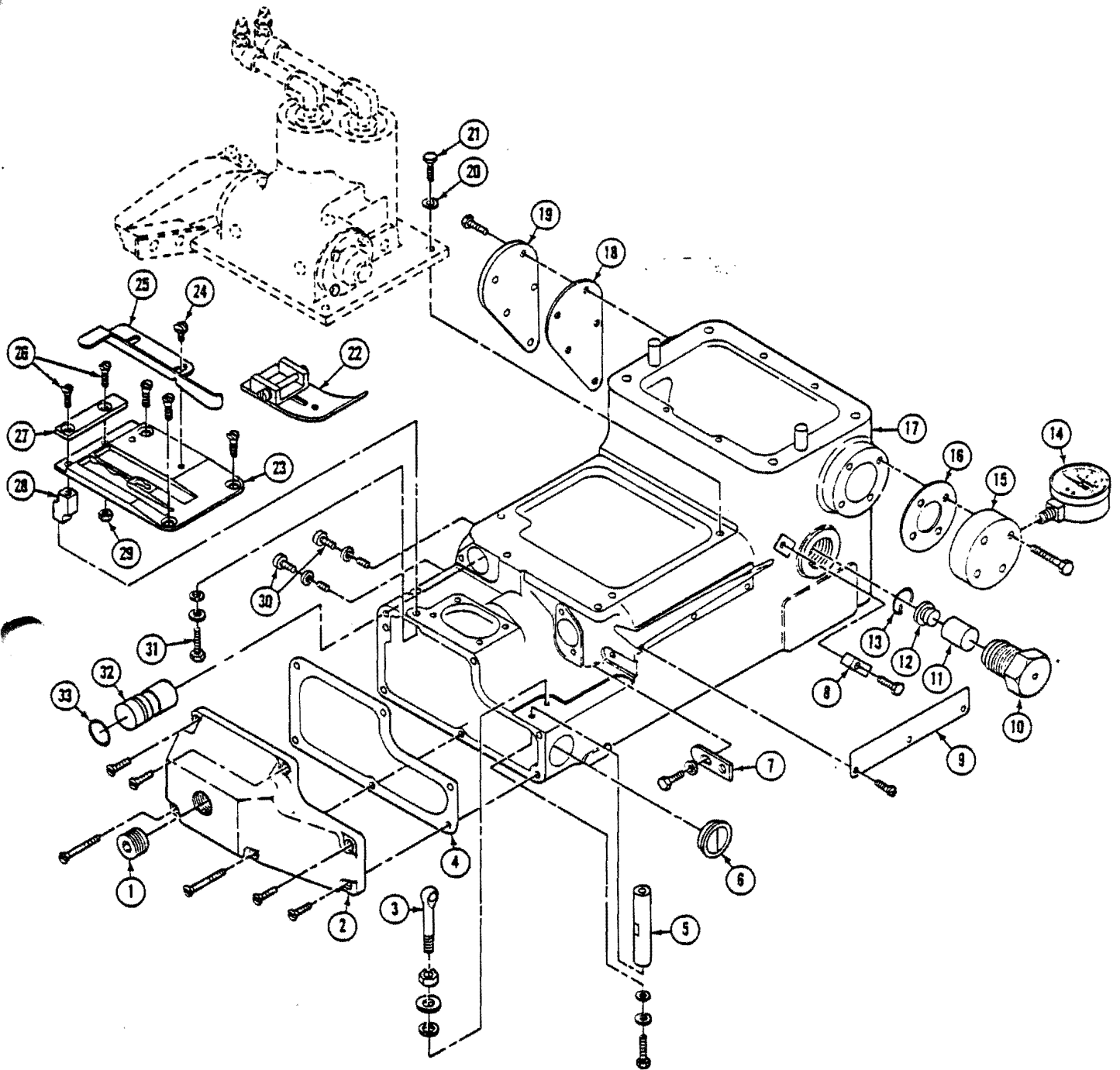
1. TAPE REEL DRAG SPRING (PART NO. A4807) TOO TIGHT.
2. TAPE MAY BE TOO WIDE FOR FOLDER.
3. FEED DOG DULL.
4. FOLDER MISALIGNED WITH SEWING HEAD.
5. TAPE REEL MISALIGNED WITH FOLDER.
6. CHECK STARTING POSITION OF CLUTCH ACTUATOR LEVERS, A-1930 & A-1931.

B. UNEVEN TAPING (MORE THAN 1/8")

1. TAPE IMPROPERLY IN FOLDER.
2. TAPE TOO NARROW FOR FOLDER.
3. FOLDER BLADES (PART NO. 10451) MISADJUSTED.

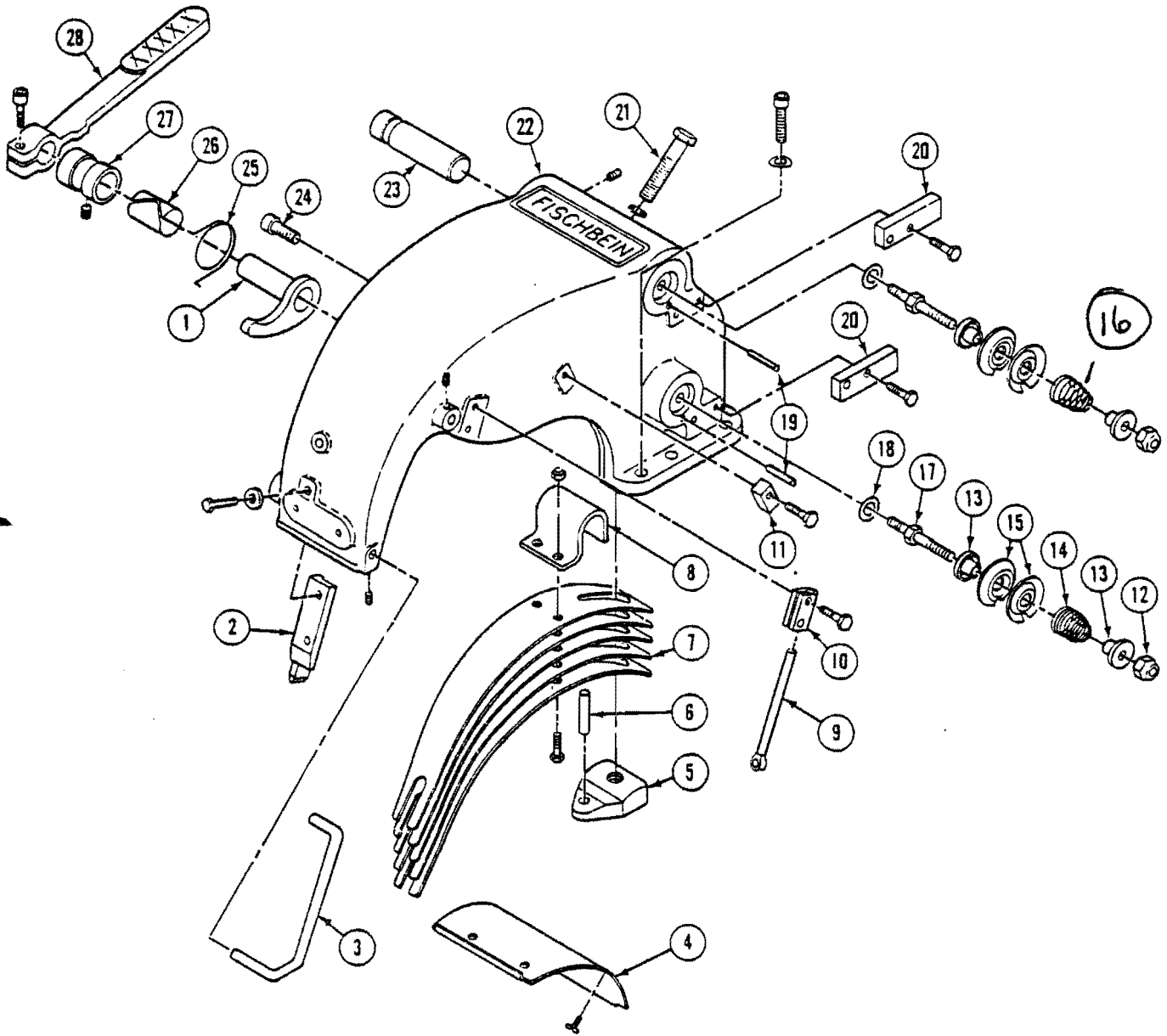
C. WRINKLING OF TAPE

1. FOLDER MISALIGNED WITH SEWING HEAD.
2. TAPE FENCE GUIDE (PART NO. 10449) TOO FAR FROM PRESSER FOOT.
3. BOTTOM SURFACE OF PRESSER FOOT ROUGH OR STICKY.
4. CHECK STARTING POSITION OF CLUTCH ACTUATOR LEVERS, A-1930 & A-1931.



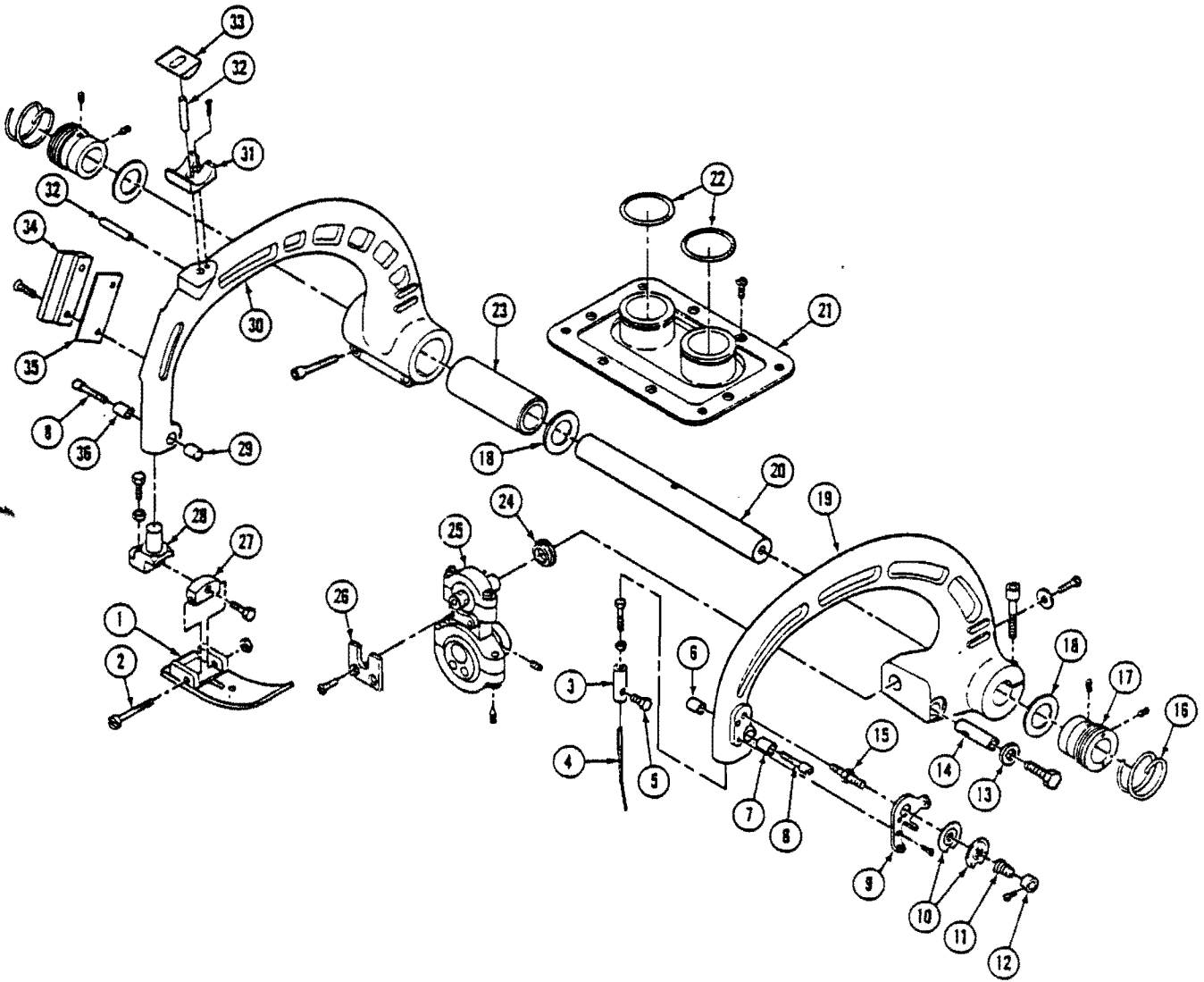
MAIN HOUSING

ITEM NO.	PART NO.	DESCRIPTION	QTY
1	10111	PLUG, DRAIN - MAGNETIC.....	1
2	10022	COVER, BOTTOM.....	1
	F1032114	SCREW, FLAT HD (LONG).....	2
	F103258	SCREW, FLAT HD (SHORT).....	4
3	10170	PULL-OFF - LOOPER THREAD.....	1
	NH1420	NUT, HEX.....	1
	WF14	WASHER.....	1
	WN14 10052	WASHER, NYLON.....	1
4	10093	GASKET, COVER - BOTTOM.....	1
5	10016	POST, LONG - THROAT PLATE.....	1
	H103212	SCREW, HEX HD.....	1
	WN8	WASHER, NYLON.....	1
	//208	WASHER.....	1
6	10112	WINDOW, OIL LEVER.....	1
7	10097	PLATE, LATCH - LOOPER DOOR.....	1
	H103212	SCREW, HEX HD.....	1
	//208	WASHER.....	1
8	10164	EYELET, THREAD - SHORT.....	1
	H103234	SCREW, HEX HD.....	1
9	10098	COVER, GROOVE - THREAD.....	1
	B632316	SCREW, BINDING HD.....	3
10	10116	ASS'Y, PLUG - BREATHER.....	1
11	10121	FILTER, PLUG - BREATHER.....	1
12	10179	BAFFLE, PLUG - BREATHER.....	1
13	10134	RING, SNAP - BREATHER BAFFLE RETAINER.....	1
14	10227	GAUGE, OIL PRESSURE.....	1
15	10226	ADAPTER, GAUGE - OIL PRESSURE.....	1
	H10321	SCREW, HEX HD.....	4
16	10094	GASKET, MAIN SHAFT SEAL.....	1
17	10001	HOUSING, MAIN.....	1
18	10095	GASKET, COVER - MANIFOLD.....	1
19	10100	COVER, MANIFOLD.....	1
	H103212	SCREW, HEX HD.....	5
20	10438	WASHER, COMPRESSION.....	4
21	H103258	SCREW, HEX HD.....	4
22	10484	FOOT, PRESSER.....	1
	10182	SCREW, HINGE.....	1
23	10485	PLATE, THROAT.....	1
24	B103214	SCREW, BINDING HD.....	2
25	10449	FENCE.....	1
26	F83212	SCREW, FLAT HD.....	2
27	10446	KNIFE, BED.....	1
28	10434	POST, OFFSET.....	1
29	NH832	NUT, HEX.....	1
30	B103238	SCREW, BINDING HD.....	2
	WN8	WASHER - NYLON.....	2
31	H103212	SCREW, HEX HD.....	1
	WN8	WASHER - NYLON.....	1
	//208	WASHER.....	1
32	10442	PLUG.....	1
33	10441	RING, "O".....	1



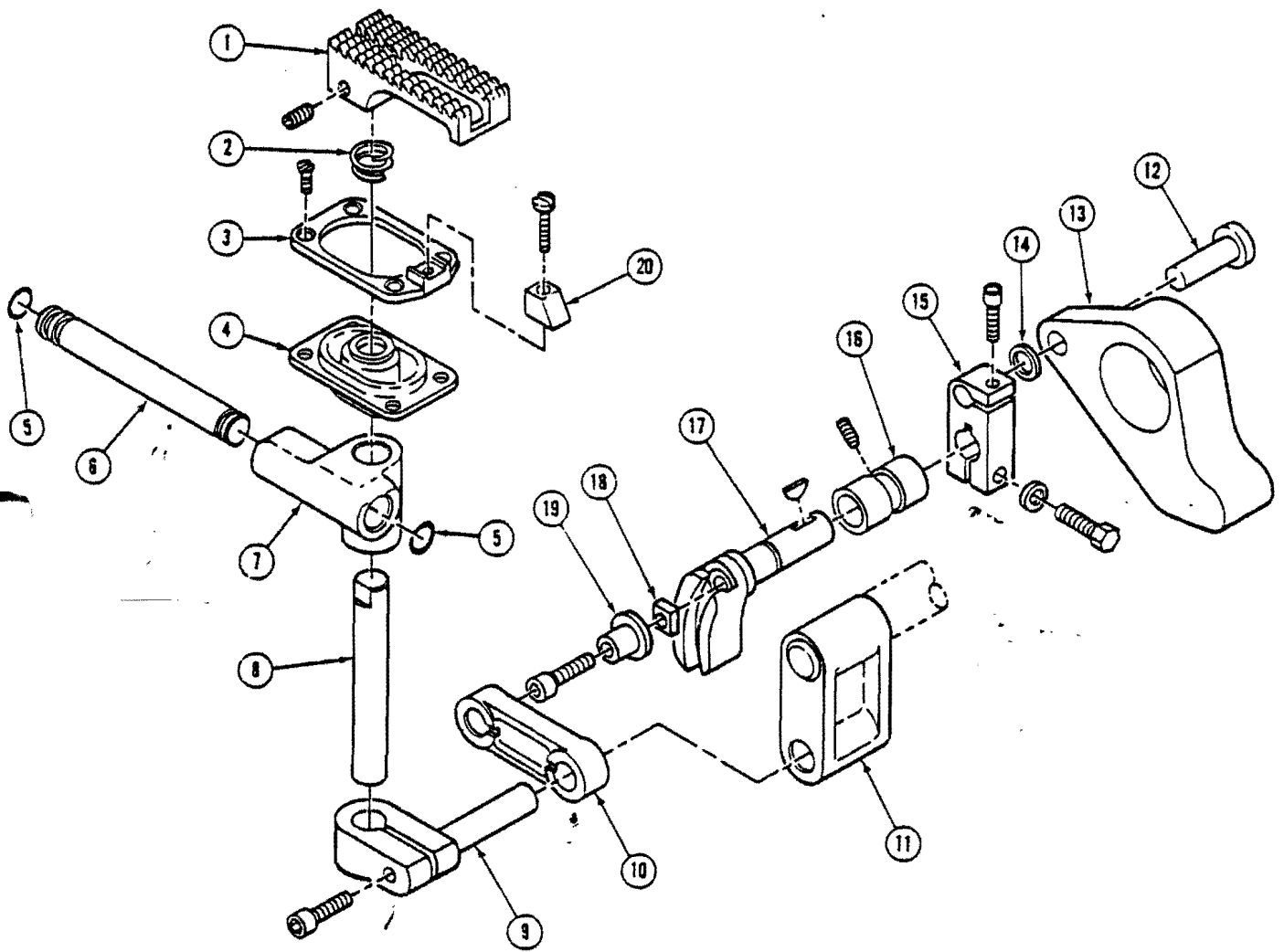
LEVERS HOUSING

ITEM NO.	PART NO.	DESCRIPTION	QTY
1	10142	CAM, LIFTER - PRESSER FOOT.....	1
2	10161	GUIDE, LEVER - PRESSER FOOT.....	1
	H103278	SCREW, HEX HD.....	2
	WF10	WASHER.....	2
3	10188	GUARD, TENSION - NEEDLE.....	1
	SS1032516	SCREW, SET.....	2
4	10123	COVER, GUARD - LEVERS.....	1
	B103238	SCREW, BINDING HD.....	2
5	10146	PLATE, PRESSER FOOT SPRING - TAPPED.....	1
6	10013	PIN, ROLL.....	1
7	10145	SPRING, PRESSER FOOT.....	5
	H103234	SCREW, HEX HD.....	2
	1-178	NUT, LOCK.....	2
8	10144	CLAMP, SPRING - PRESSER FOOT.....	1
9	10171	PULL-OFF, NEEDLE THREAD.....	1
10	10172	CLAMP, NEEDLE THREAD PULL-OFF.....	1
	H103234	SCREW, HEX HD.....	2
11	10164	EYELET, THREAD - SHORT.....	1
	H103234	SCREW, HEX HD.....	1
12	NH1428L	NUT.....	2
13	10114	SLEEVE, TENSION.....	4
14	10008	SPRING, TENSION - LOOPER THREAD.....	1
15	10120	DISC, TENSION - LARGE.....	1
16	10007	SPRING, TENSION - NEEDLE THREAD.....	1
17	10115	STUD, TENSION.....	2
18	120	WASHER, LOCK.....	2
19	10010	PIN, RETAINING - TENSION DISC.....	2
20	10165	EYELET, THREAD - LONG.....	2
	H103234	SCREW, HEX HD.....	4
21	H3824134	SCREW, ADJUSTING.....	1
	WF38	WASHER.....	1
22	10002	HOUSING, LEVERS.....	1
	SC516181	SCREW, SOCKET HD CAP.....	4
	WS516	WASHER, SPRING.....	4
23	10143	SHAFT, SPRING - PRESSER FOOT.....	1
	SS142038	SCREW, SET.....	1
24	SC5161858	SCREW, STOP - LIFTER LEVER.....	1
25	10187	SPRING, LIFTER LEVER.....	1
26	10186	LINER, BUSHING - LIFTER LEVER.....	1
27	10139	BUSHING, LIFTER - PRESSER FOOT.....	1
	SS142014	SCREW, SET.....	1
28	10141	LEVER, LIFTER - PRESSER FOOT.....	1
	SC142034	SCREW, SOCKET HD CAP.....	1



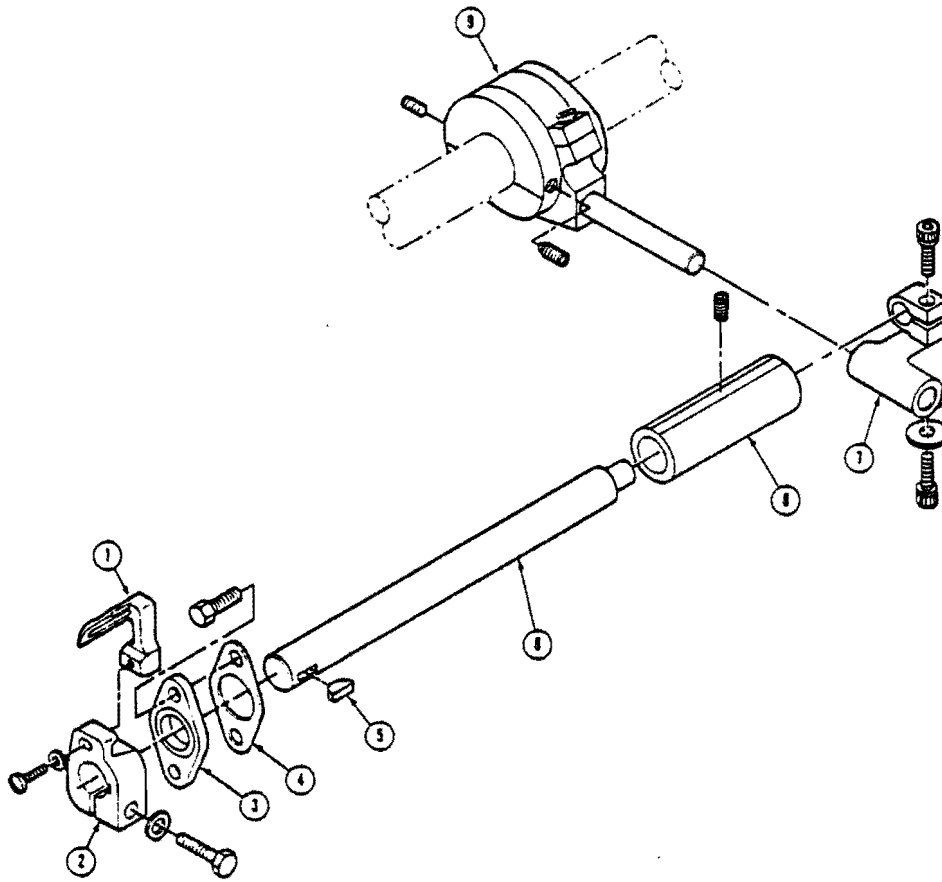
NEEDLE & PRESSER FOOT LEVER ASSEMBLIES

ITEM NO.	PART NO.	DESCRIPTION	QTY.
1	10484	PRESSER FOOT.....	1
2	10182	BOLT, HINGING - PRESSER FOOT.....	1
	NO 10 NH 1032	NUT.....	1
3	10031	CHUCK, NEEDLE.....	1
	H103234	SCREW, HEX HD.....	1
	NO 10 NH 1032	NUT, HEX HD.....	1
4	C-100-S	NEEDLE.....	1
5	10011	SCREW, CLAMP - NEEDLE.....	1
6	10212	PLUG, CLAMP - TAPPED (NEEDLE LEVER).....	1
7	10211	PLUG, CLAMP DRILLED (NEEDLE LEVER).....	1
8	SC63234	SCREW, SOCKET HD CAP.....	1
9	10166	GUIDE, THREAD - NEEDLE LEVER.....	1
	F54038	SCREW, FLAT HD.....	2
10	10119	DISC., TENSION - SMALL.....	2
11	10009	SPRING, TENSION - NEEDLE LEVER.....	1
12	10181	COLLAR, TENSION - NEEDLE LEVER.....	1
	B632316	SCREW, BINDING HD.....	1
13	10231	WASHER, HEAVY - NEEDLE LEVER.....	1
	H103212	SCREW, HEX HD.....	1
14	10232	ROD, CLAMP - NEEDLE LEVER.....	1
15	10113	STUD, TENSION - NEEDLE LEVER.....	1
16	10023	INSERT, THREAD - LEVERS SHAFT BUSHING.....	2
17	10025	BUSHING, SHAFT - LEVERS.....	2
	SS1032316	SCREW, SET (SHORT).....	2
	SS103238-	SCREW, SET (LONG).....	2
18	T3129	WASHER, THRUST.....	3
19	10003	LEVER, NEEDLE.....	1
	SC1420114	SCREW, SOCKET HD CAP.....	2
20	10026	SHAFT, LEVERS.....	1
21	10137	SEAL, LEVERS.....	1
	F103238	SCREW, FLAT HD.....	4
22	10128	SPRING, GARTER - LEVERS SEAL.....	2
23	10028	BUSHING, LEVER - PRESSER FOOT.....	1
24	10159	SPACER, STUD - BALL.....	1
25	10047	ROD, CONNECTING - NEEDLE DRIVE.....	1
	SS142038CP	SCREW, SET - CONE POINT.....	1
	SS142014	SCREW, SET.....	1
	H103238	SCREW, HEX HD.....	1
	WS10	WASHER, SPRING.....	1
26	10048	RESTRAINER, ROD - CONNECTING.....	1
	F103238	SCREW, FLAT HD.....	2
27	10156	BLOCK, HINGE - PRESSER FOOT.....	1
	H103234	SCREW, HEX HD.....	1
28	10155	SHANK, PRESSER FOOT.....	1
	H103234	SCREW, HEX HD.....	1
	NO 10 NH 1032	NUT, HEX.....	1
29	10214	PLUG, CLAMP-TAPPED (PRESSER FOOT).....	1
30	10004	LEVER, PRESSER FOOT.....	1
	SC1420114	SCREW, SOCKET HD CAP.....	2
31	10189	CRADLE, PAD-PRESSER FOOT SPRING.....	1
	F63212	SCREW, FLAT HD.....	1
32	10193	PIN, ROLL.....	2
33	10190	PAD, SPRING - PRESSER FOOT.....	1
34	10163	CLAMP, BEARING - SHEET.....	1
	F103258	SCREW, FLAT HD.....	2
35	10162	SHEET, BEARING-PRESSER FOOT LEVER GUIDE.....	1
36	10213	PLUG, CLAMP-DRILLED (PRESSER FOOT).....	1

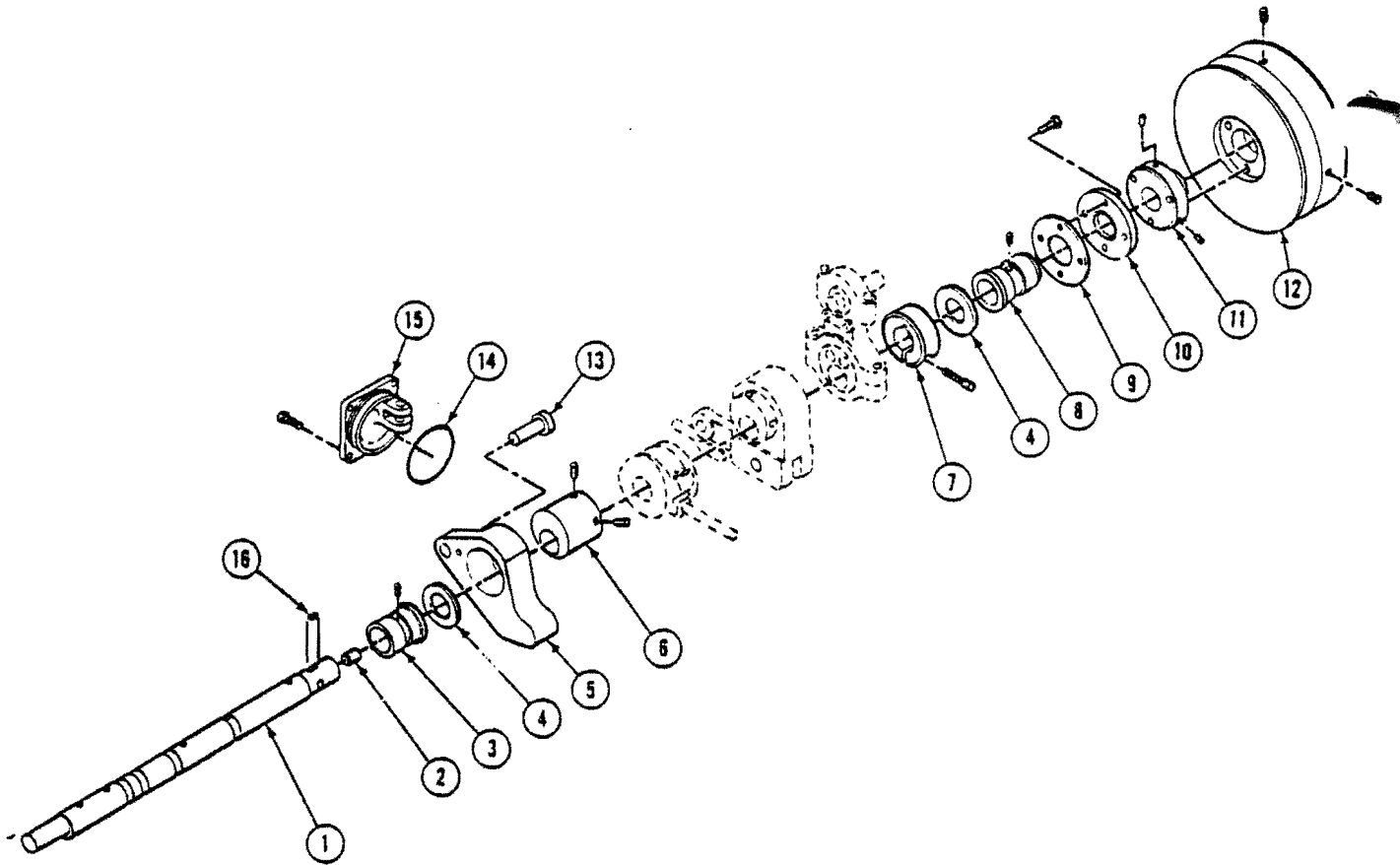


FEED ASSEMBLY

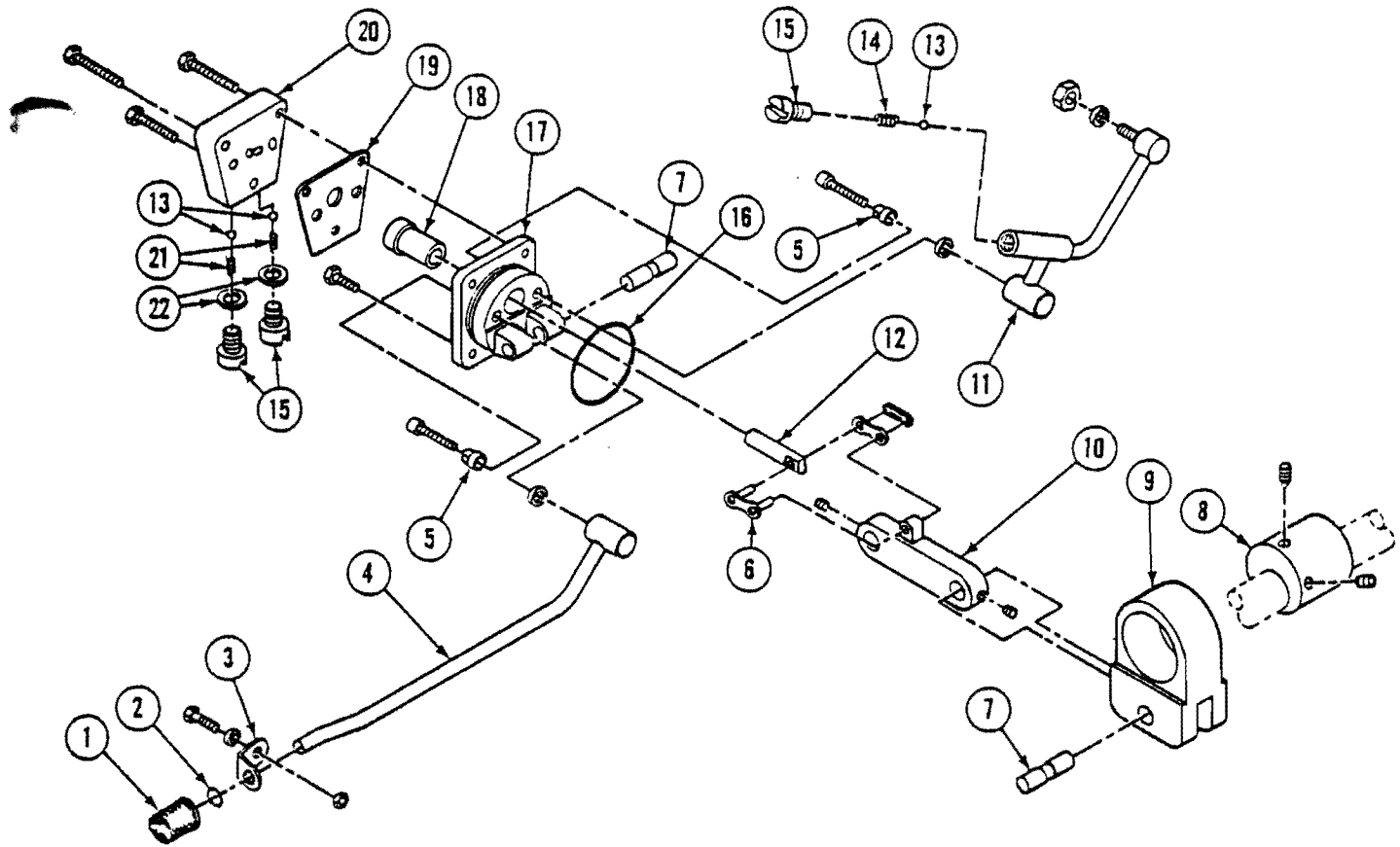
ITEM NO.	PART NO.	DESCRIPTION	QTY
1	10486	DOG, FEED.....	1
	SS1032516	SCREW, SET	1
2	10124	RING, GARTER -FEED DOG SEAL.....	1
3	10177	HOLDER, GUARD - NEEDLE.....	1
	F103238	SCREW, FLAT HD.....	4
4	10077	SEAL, DOG - FEED.....	1
5	10075	RING, "O".....	2
6	10074	ROD, SLIDE - FEED.....	1
7	10073	SLIDE, FEED.....	1
8	10072	ROD, CARRIER - FEED DOG.....	1
9	10070	CLAMP ROD - FEED DOG CARRIER.....	1
	SC142078	SCREW, SOCKET HD.....	1
10	10069	LINK, STROKE - FEED.....	1
11	10071	LINK, LIFT - FEED.....	1
12	10064	PIN ROD - FEED STROKE CONNECTING.....	1
13	10062 10062	ROD, CONNECTING - PRIMARY FEED STROKE.....	1
14	10215	WASHER, THRUST.....	1
15	10063	LEVER, PIN - FEED ROCKER.....	1
	SC54012	SCREW, SOCKET HD CAP.....	1
	H103258	SCREW, HEX HD.....	1
	//208	WASHER.....	1
16	10109	BUSHING, SHAFT - FEED ROCKER.....	1
	SS1032516	SCREW, SET.....	1
17	10066	LEVER, SLOTTED - FEED ROCKER.....	1
	B103373192	KEY, <i>WOODRUFF</i>	1
18	10067	NUT, PIVOT - FEED STROKE ADJUSTING.....	1
	SC142878	SCREW, SOCKET HD CAP.....	1
19	10068	PIVOT, ADJUSTING - FEED STROKE.....	1
20	10174	GUARD, NEEDLE.....	1
	P540916	SCREW, PAN HD.....	1



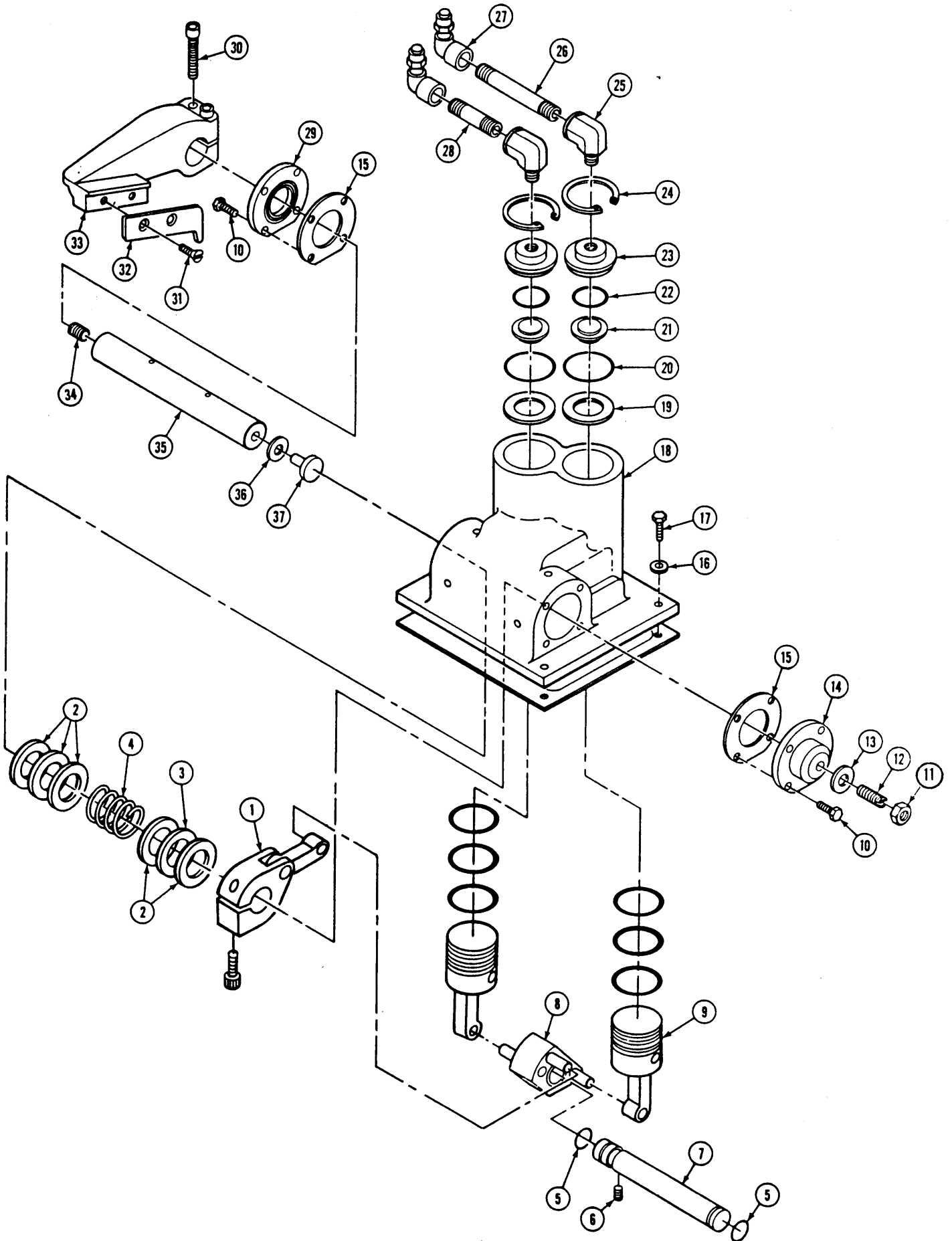
LOOPER ASSEMBLY			
ITEM NO.	PART NO.	DESCRIPTION	QTY.
1	10060	LOOPER (TWO THREAD).....	1
	10208	LOOPER (SINGLE THREAD).....	1
2	P540916	SCREW, PAN HD.....	1
	WF5	WASHER.....	1
3	10059	HOLDER, LOOPER.....	1
	H103234	SCREW, HEX HD.....	1
	//208	WASHER.....	1
4	10076 15104	ASS'Y SEAL - LOOPER SHAFT.....	1
	H103212	SCREW, HEX HD.....	2
5	10058 15105	GASKET, SEAL - LOOPER SHAFT.....	1
6	81035 T3192	KEY, W.D. DRUFF.....	1
7	10055	SHAFT, LOOPER.....	1
8	10173	ASS'Y, PIVOT - LOOPER.....	1
	SC103212	SCREW, SOCKET HD CAP.....	2
	WF10S	WASHER.....	1
9	10056	BUSHING, SHAFT - LOOPER.....	1
	SS1032516	SCREW, SET.....	1
	10150	ASS'Y CAM - LOOPER.....	1
	SS103258-CPL	SCREW, SET - CONE POINT.....	1
	SS103212L	SCREW, SET.....	1



MAIN SHAFT ASSEMBLY			
ITEM NO.	PART NO.	DESCRIPTION	QTY.
1	10045	SHAFT, MAIN.....	1
2	10125	PLUG, PIPE - MAIN SHAFT.....	1
3	10044	BUSHING, MAIN SHAFT - NEEDLE END.....	1
	SS1032516	SCREW, SET.....	1
4	T-3129	WASHER, THRUST.....	2
5	10062 10062	ROD, CONNECTING - PRIMARY FEED STROKE.....	1
6	10061	ECCENTRIC, STROKE - FEED.....	1
	SS142038	SCREW, SET.....	1
	SS142038-CP	SCREW, SET - CONE POINT.....	1
7	10158	COLLAR, LOCK - MAIN SHAFT.....	1
	SC103258	SCREW, SOCKET HD CAP.....	1
8	10043	BUSHING, MAIN SHAFT - DRIVE END.....	1
	SS1032516	SCREW, SET.....	1
9	10094	GASKET, MAIN SHAFT SEAL.....	1
10	10035	ASS'Y, SEAL - MAIN SHAFT.....	1
	H103212	SCREW, HEX HD.....	4
11	10038	HUB, PULLEY - DRIVE.....	1
	SS142038	SCREW, SET.....	2
12	10199	PULLEY, ADJUSTABLE.....	1
	SS142038	SCREW, SET.....	2
	F103258	SCREW, FLAT HD.....	3
13	10064	PIN, ROD - FEED STROKE CONNECTING.....	1
14	10084	RING, "O".....	1
15	10085	BRACKET, PIVOT - KNIFE.....	1
	H103212	SCREW, HEX HD.....	4
16	B-1035T3192	KEY, WOODRUFF.....	1



OIL PUMP & COUNTERWEIGHT ASSEMBLY			
ITEM NO.	PART NO.	DESCRIPTION	QTY.
1	10191	ASS'Y, FILTER - INTAKE.....	1
2	10192	RING, "O" - INTAKE FILTER.....	1
3	10204	RETAINER, TUBE - INTAKE.....	1
	B103212	SCREW, BINDING HD.....	1
	WN8	WASHER, NYLON.....	1
	NH10321 NH1032	NUT.....	1
4	10105	ASS'Y, TUBE - INTAKE.....	1
	10107	RING, "O" - INTAKE TUBE.....	1
5	10178	INSERT, BODY - PUMP.....	2
	SC63278	SCREW, SOCKET HD CAP.....	2
6	10104	LINK, CONNECTING - PUMP DRIVE.....	1
7	10103	PIN, PIVOT - PUMP DRIVE.....	2
8	10061	ECCENTRIC, STROKE - PUMP.....	1
	SS142038	SCREW, SET.....	1
	SS142038CP	SCREW, SET - CONE POINT.....	1
9	10101	COUNTERWEIGHT & PUMP DRIVE.....	1
10	A-10102	LINK, CONTROL - PUMP DRIVE.....	1
	SS1032316	SCREW, SET.....	2
11	10106	ASS'Y, TUBE - PRESSURE.....	1
	NH1420	NUT, HEX.....	1
	10107	RING, "O" - TUBE TERMINAL.....	2
12	10169	PISTON, PUMP.....	1
13	10051	BALL, VALVE.....	3
14	10130	SPRING, RELIEF - OIL PRESSURE.....	1
15	10053	PLUG, SPRING - VALVE.....	3
16	10084	RING, "O".....	1
17	10167	BODY, PUMP.....	1
	H103212	SCREW, HEX HD.....	2
18	10168	CYLINDER, PUMP.....	1
19	10049	GASKET, BLOCK - VALVE.....	1
20	10050	BLOCK, VALVE.....	1
	H1032114	SCREW, HEX HD (LONG).....	2
	H10321	SCREW, HEX HD (SHORT).....	1
21	10127	SPRING, BLOCK - VALVE.....	2
22	10052	SEAL, WASHER - VALVE PLUG.....	2



TAPE CLIPPER

ITEM	QUAN.	PART NO.	DESCRIPTION
1	1	10447	ASS'Y., LEVER CUTTER
	1	SC14201	SCREW, SOC. CAP #1/4-20 x 1 LOCK'G
2	5	T3129	WASHER, THRUST
3	1	P4024	BEARING, THRUST
4	1	10424	SPRING, COMPRESSION
5	2	10420	RING, "O" - CRANKSHAFT
6	1	SS1032316	SCREW, SET
7	1	10419	CRANKSHAFT
8	2	10404	ASSEMBLY, CRANK
9	2	10458	ASS'Y., PISTON - TAPE CLIPPER
	4	10398	RING, BACKUP
	2	10399	U-CUP
10	8	SB103214	SCREW, SOC. BUTTON #10-32 X 1/2
11	1	NH1428	NUT, HEX
12	1	10440	SCREW, ADJUSTING
13	1	10052	WASHER, NYLON
14	1	10430	PLATE, COVER
15	2	10429	GASKET
REF.	1	10092	GASKET, COVER - TOP
16	4	10438	WASHER, COMPRESSION
17	4	H103258	SCREW, HEX HD
18	1	10405	HOUSING, CUTTER
19	2	10406	WASHER, HEAD CYLINDER
20	2	10409	RING, "O" - CYLINDER HEAD
21	2	10407	PLATE, BUMPER
22	2	10408	RING, BUMPER
23	2	10410	HEAD, CYLINDER
24	2	10411	RING, SNAP
25	2	P4957	ELBOW, STREET
26	1	P4944	NIPPLE, LONG
27	2	P4962	ELBOW, FEMALE
28	1	P4943	NIPPLE, LONG
29	1	10403	ASSEMBLY, SEAL - SHAFT
30	2	SC1420114	SCREW, SOCKET CAP
31	2	F103212	SCREW, FLAT HD
32	1	10443	KNIFE, MOVING
33	1	10432	LEVER, KNIFE
34	1	10125	PLUG, PIPE - MAINSHAFT
35	1	10426	SHAFT, KNIFE
36	1	10428	WASHER, THRUST
37	1	10427	SHAFT, THRUST